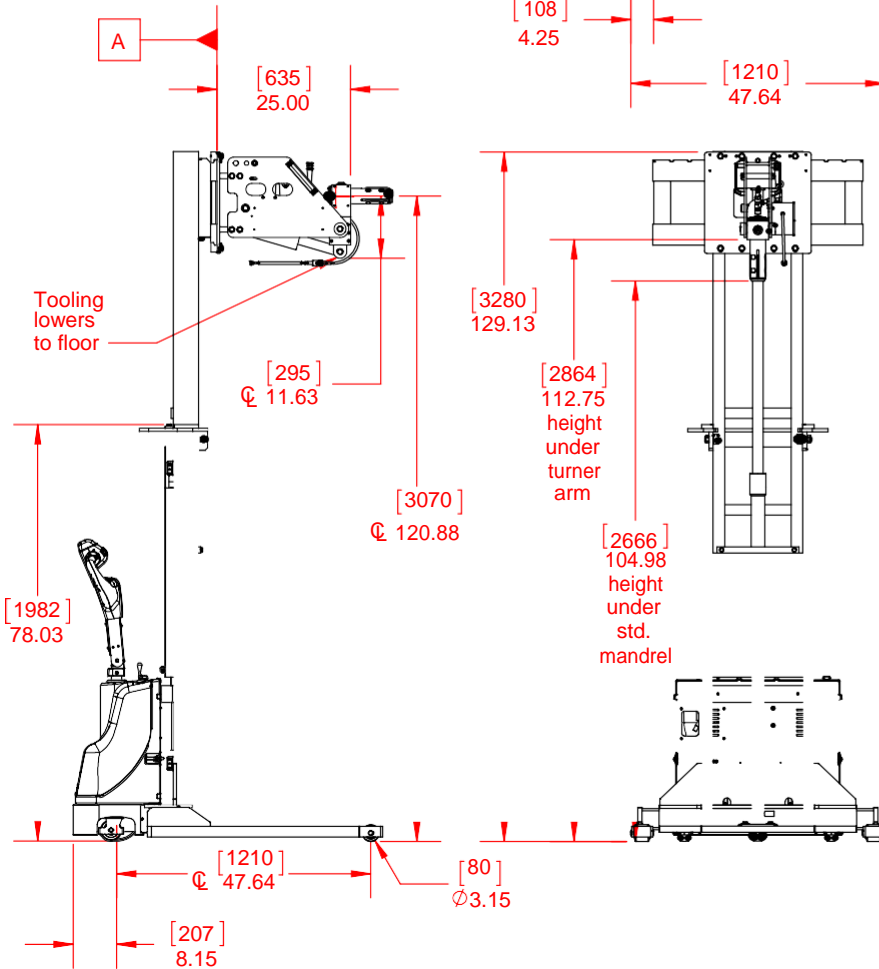
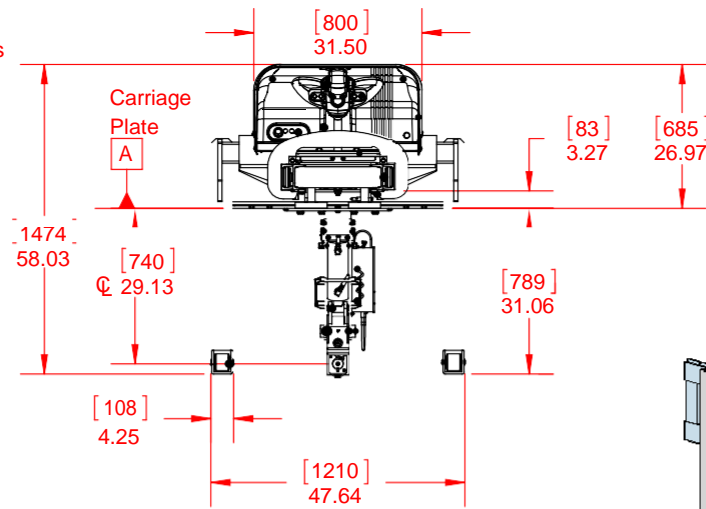


Master Light 105/29-PT10X

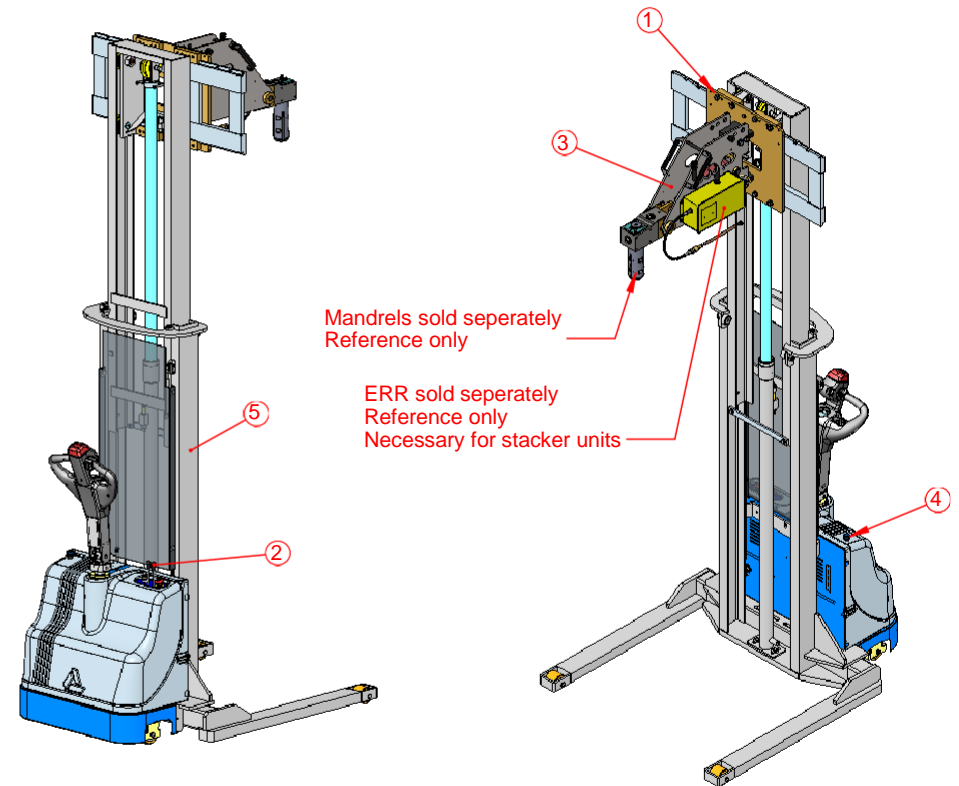
See PT10X capacity chart for max roll sizes

See Armanni Spec Sheet
for more details on stacker



ITEM NO.	PART NUMBER	DESCRIPTION	QTY.
1	E-206104	Tooling Hook Mount for Hydraulic stacker attachments	1
2	E-206108	Precision Hydraulics Package w/charger (Master)	1
3	E-206112	Hydraulic Turner Tooling (std. mandrel)	1
4	E-210070	Armanni PT10X Controls	1
5	P-60152	Master Light SL NFAL	1

Truck and batteries shipped separately to international customers

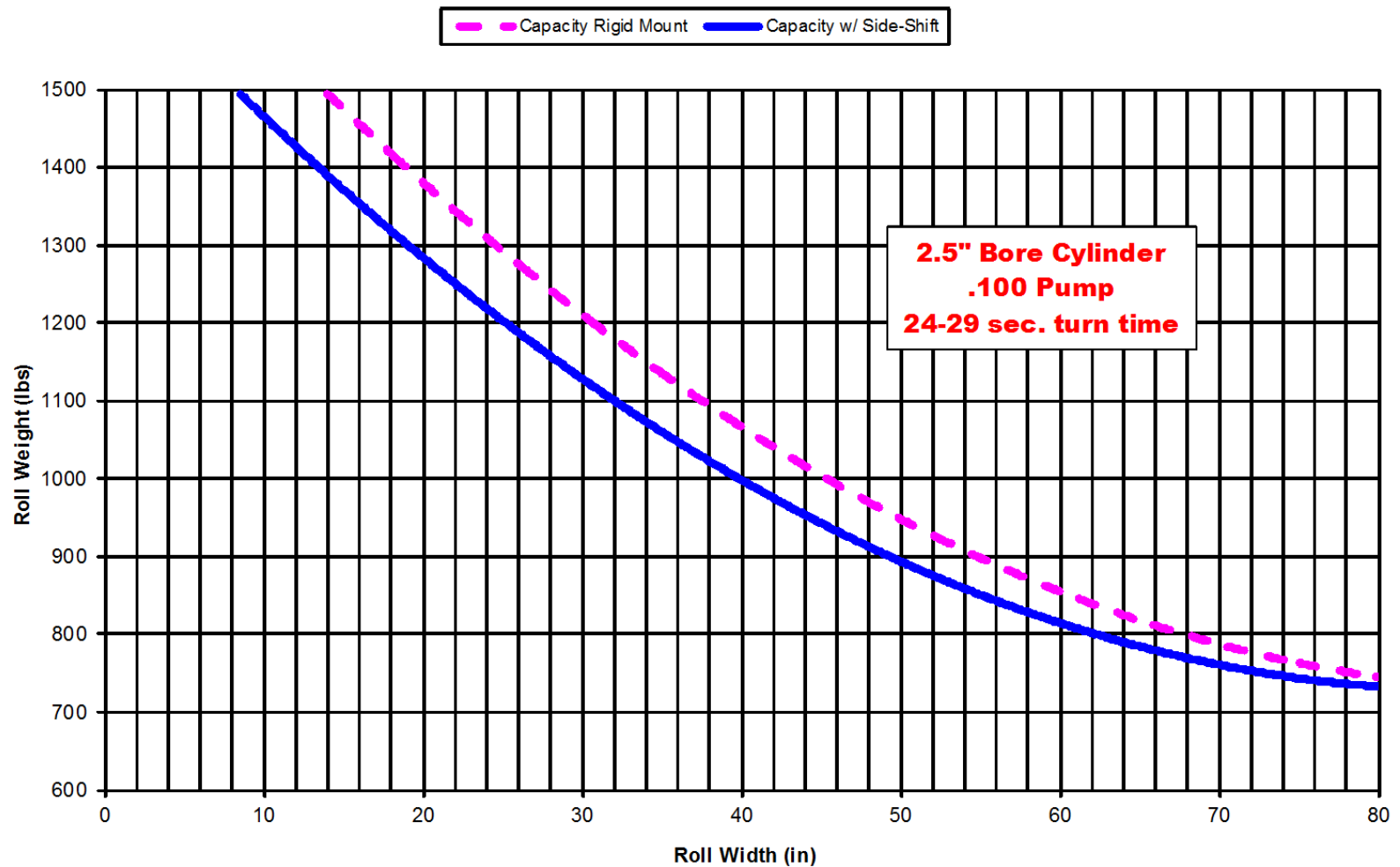


parts marked with (*) indicate recommended spare parts to be kept on hand, per unit

THE INFORMATION CONTAINED		PART. NO.	
		M-100488	
SIZE		UNIT WEIGHT (lb)	
A	DO NOT SCALE DRAWING	2051.041	
DRAWN BY		DESIGNED BY	DATE CREATED
Rich West		Rich West	5/29/2013
MODEL			DATE PRINTED
Master Light 105/29 NFAL-PT10X			5/29/2013

REVISIONS			
REV.	DESCRIPTION	DATE	INITIALS

PT10X Hydraulic Turner on Stackers



Note: Consult with R&D Ergo before handling rolls heavier than 1000lbs (454kg) or wider than 70" (1778mm).

parts marked with (*) indicate recommended spare parts to be kept on hand, per unit

		PART NO.	REV.
		M-100488	
SIZE	DO NOT SCALE DRAWING	UNIT WEIGHT (lb)	
A		2051.041	
DRAWN BY Rich West		DESIGNED BY Rich West	DATE CREATED 5/29/2013
MODEL Master Light 105/29 NFAL-PT10X			DATE PRINTED 5/29/2013