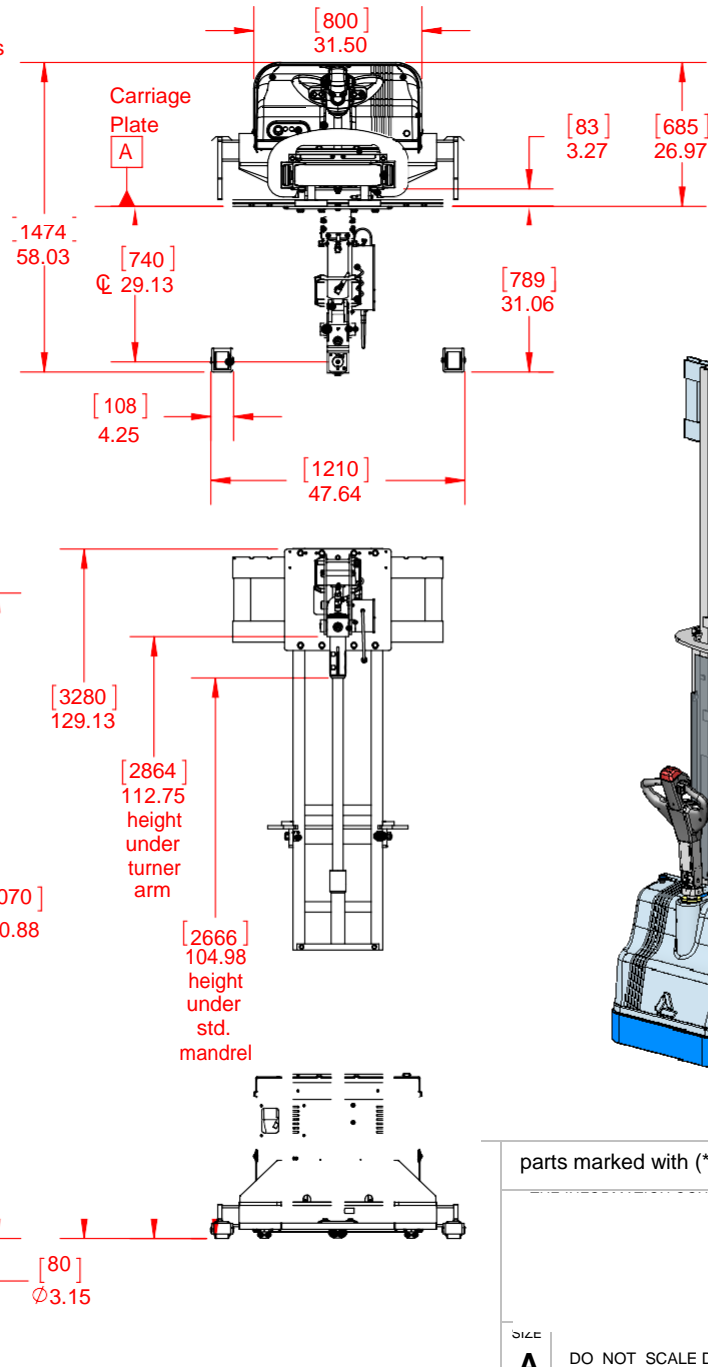


Master Light 105/29-PT10X

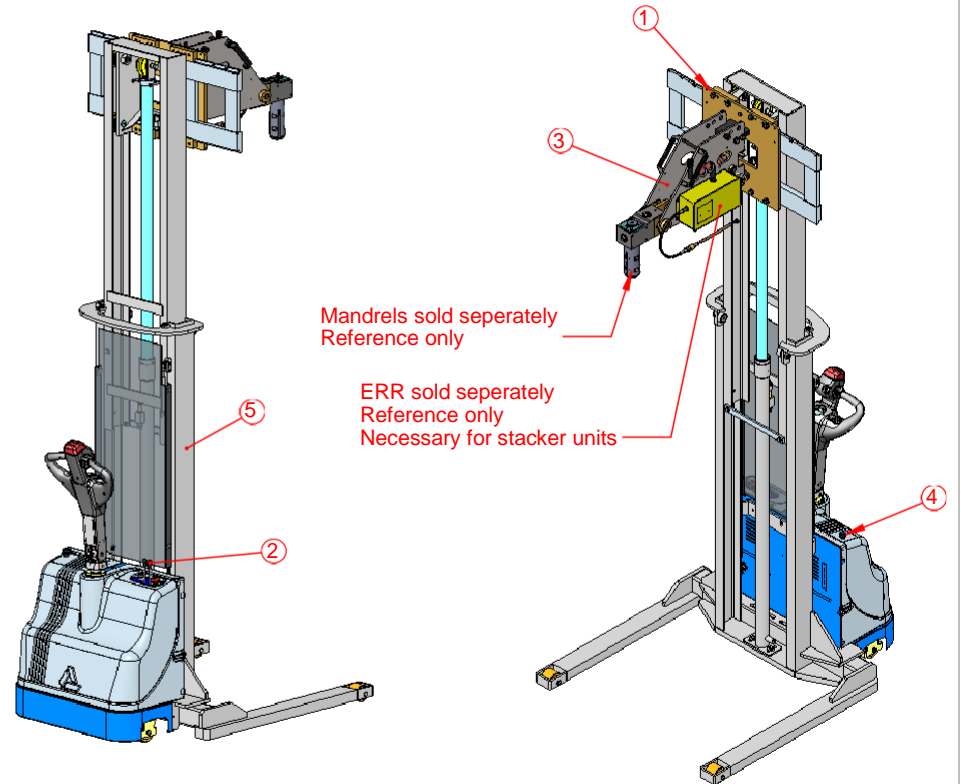
See PT10X capacity chart for max roll sizes

See Armanni Spec Sheet for more details on stacker



ITEM NO.	PART NUMBER	DESCRIPTION	QTY.
1	E-206104	Tooling Hook Mount for Hydraulic stacker attachments	1
2	E-206108	Precision Hydraulics Package w/charger (Master)	1
3	E-206112	Hydraulic Turner Tooling (std. mandrel)	1
4	E-210070	Armanni PT10X Controls	1
5	P-60152	Master Light SL NFAL	1

Truck and batteries shipped separately to international customers



parts marked with (*) indicate recommended spare parts to be kept on hand, per unit

PART. NO.	
M-100488	
SIZE	UNIT WEIGHT (lb)
A DO NOT SCALE DRAWING	2051.041
DRAWN BY	DESIGNED BY
Rich West	Rich West

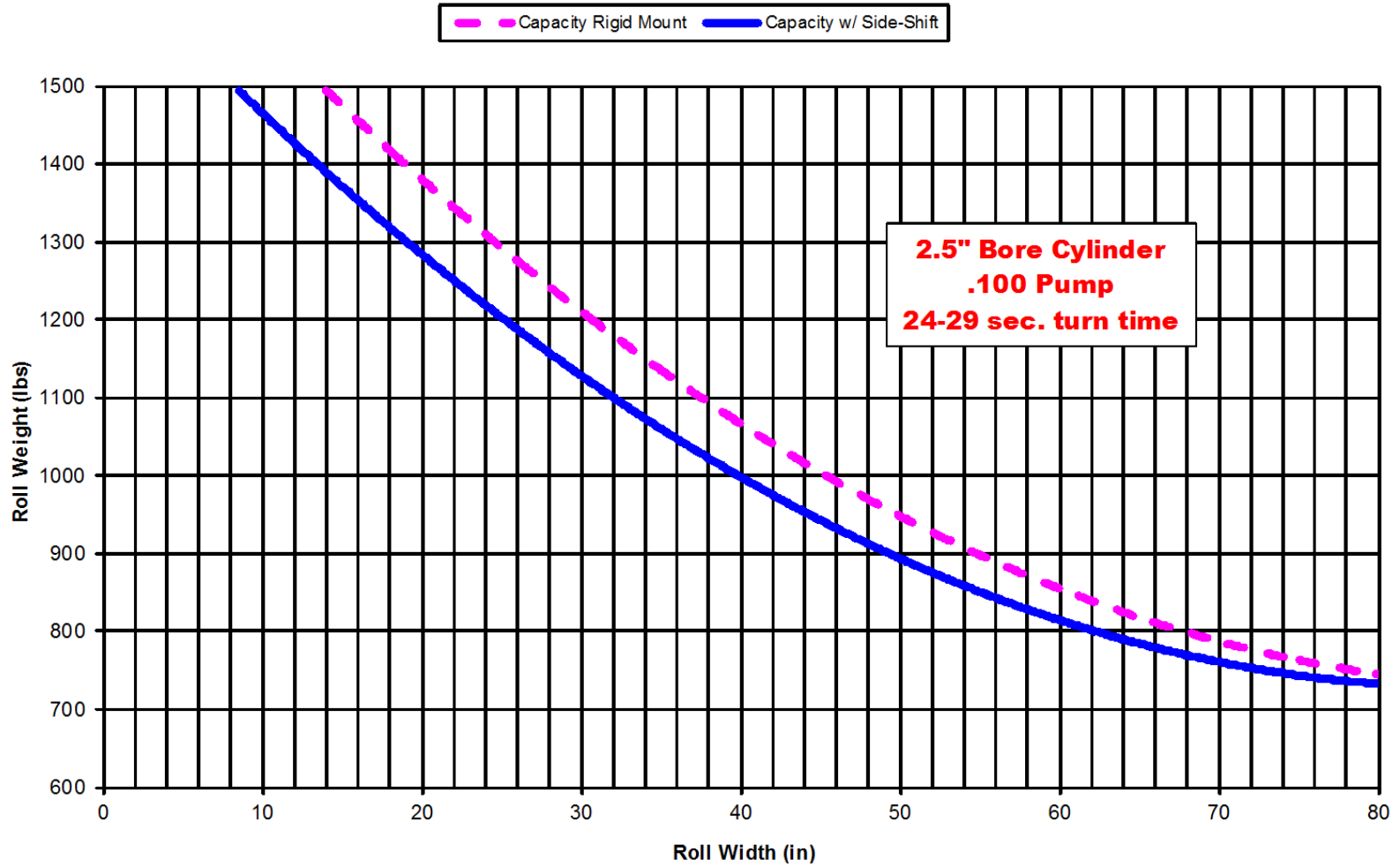
DATE CREATED
5/29/2013

DATE PRINTED
5/29/2013

REVISIONS			
REV.	DESCRIPTION	DATE	INITIALS

MODEL
Master Light 105/29 NFAL-PT10X

PT10X Hydraulic Turner on Stackers



parts marked with (*) indicate recommended spare parts to be kept on hand, per unit

PART NO.		REV.
M-100488		
SIZE	UNIT WEIGHT (lb)	
A	2051.041	
DRAWN BY Rich West		DESIGNED BY Rich West
MODEL Master Light 105/29 NFAL-PT10X		DATE CREATED 5/29/2013
		DATE PRINTED 5/29/2013