



## Model # 900 & 905 Drum Pourers

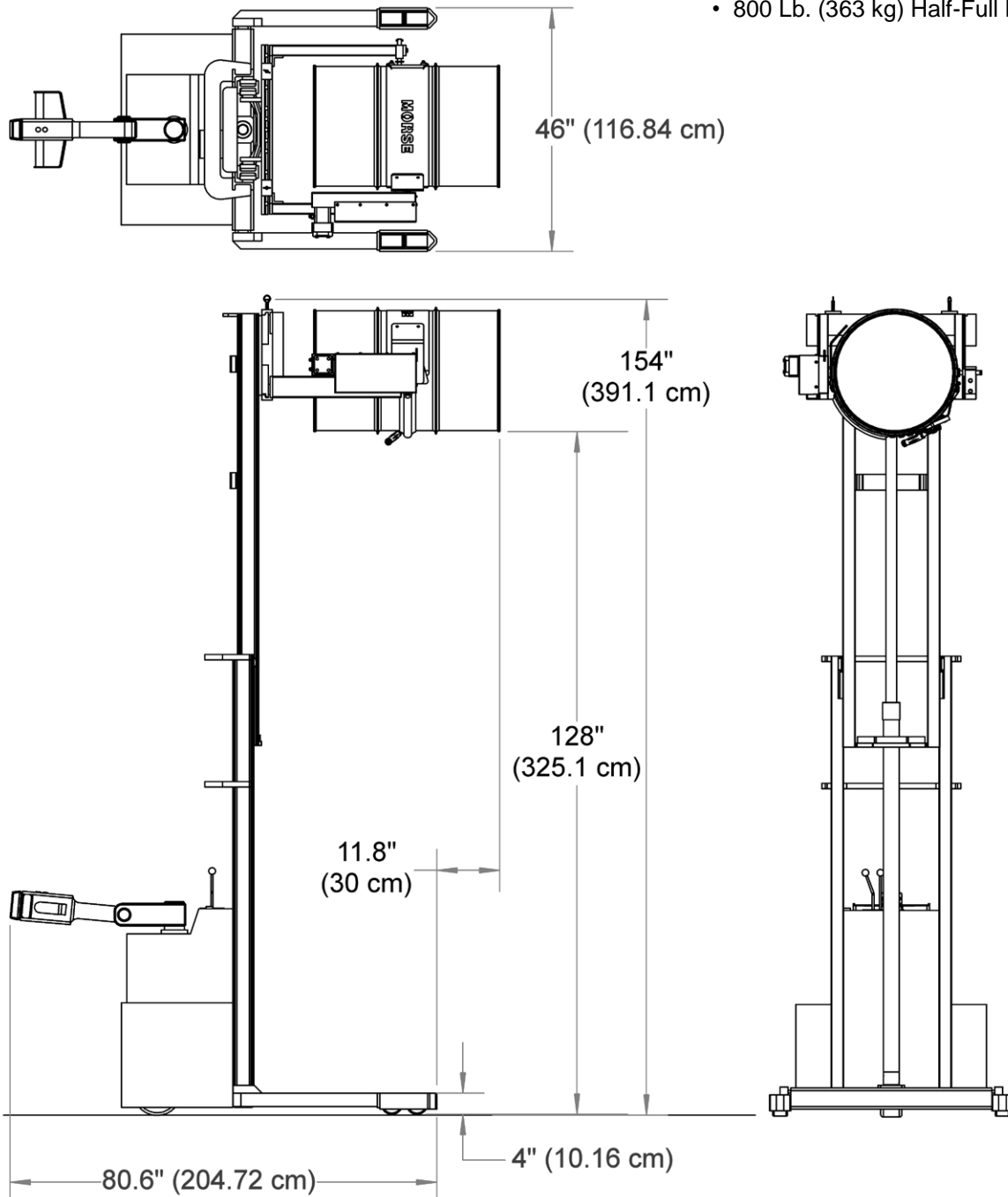
### Dimensions of Model 900 < PILOT > Power-Propelled Drum Pourer with drum raised to maximum dispensing height

Net Weight: 2230 Lb. (1012 kg)

Capacity

- 1500 Lb. (680 kg) Full Drum
- 800 Lb. (363 kg) Half-Full Drum \*

MADE  
IN  
USA



\* Half-full rating is an indication of capacity for tilting unbalanced, bottom-heavy drum. Partially full drum with unbalanced and shifting load is harder to tilt than full drum.



## Model # 900 & 905 Drum Pourers

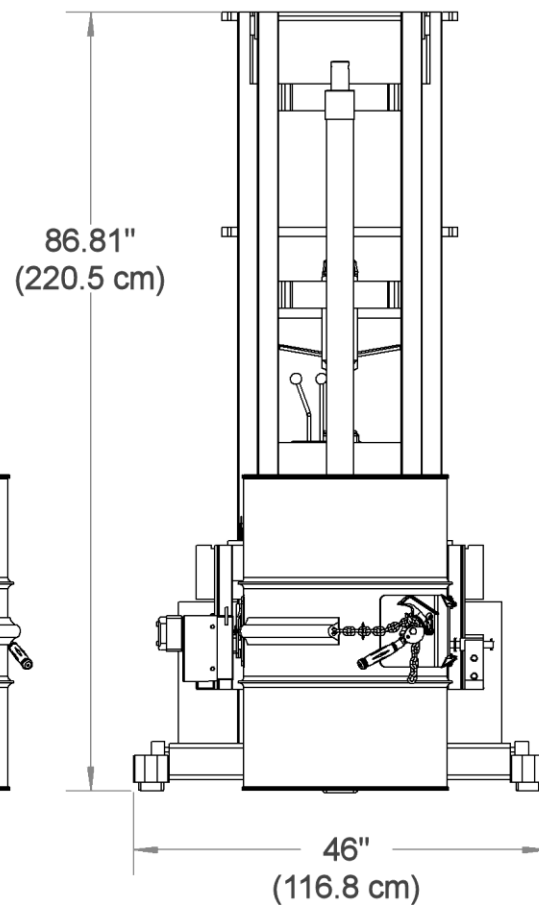
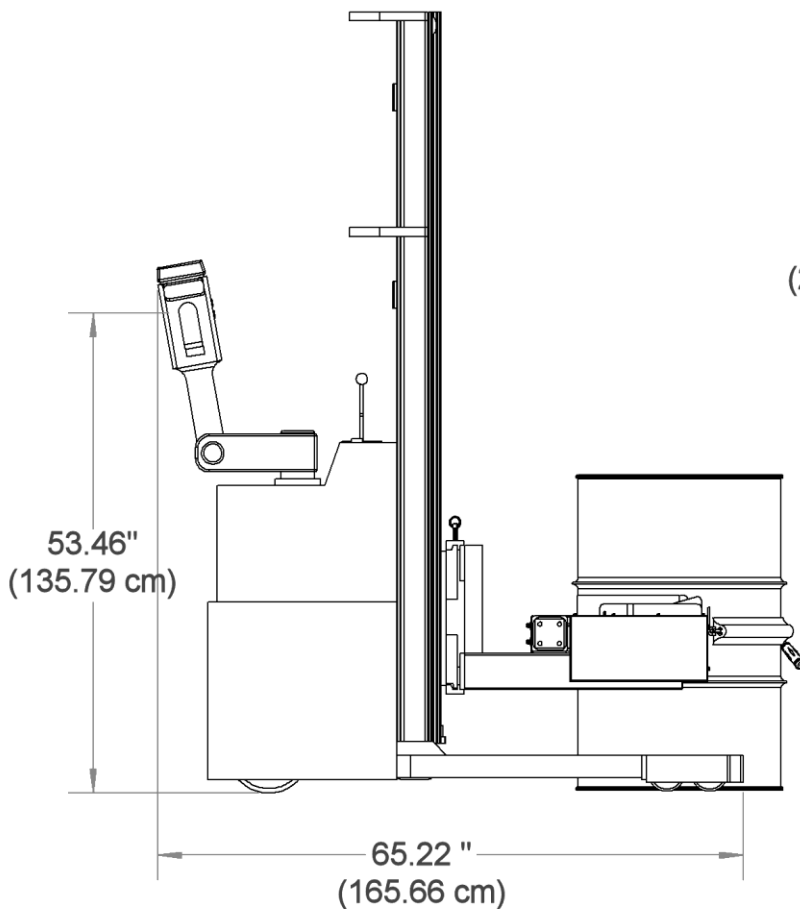
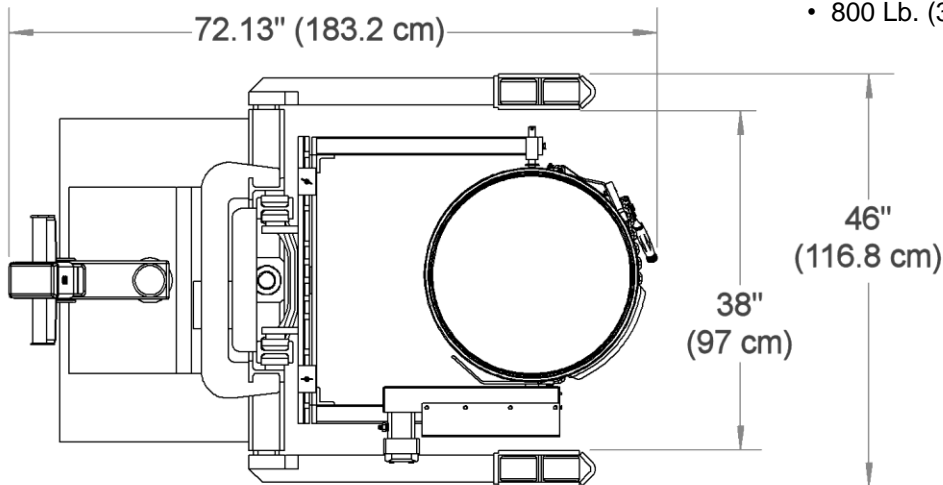
### Dimensions of Model 900 < PILOT > Power-Propelled Drum Pourer with drum lowered to floor

Net Weight: 2230 Lb. (1012 kg)

Capacity

- 1500 Lb. (680 kg) Full Drum
- 800 Lb. (363 kg) Half-Full Drum \*

MADE  
IN  
USA

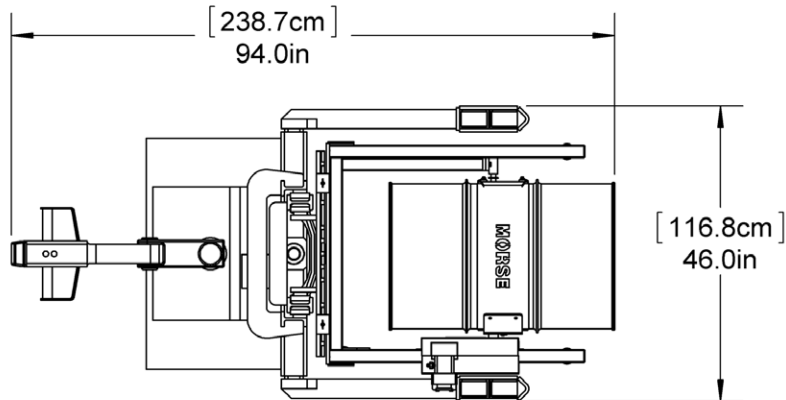


\* Half-full rating is an indication of capacity for tilting unbalanced, bottom-heavy drum. Partially full drum with unbalanced and shifting load is harder to tilt than full drum.



## Model # 900 & 905 Drum Pourers

### Dimensions of Model 905 < PILOT > Scale-Equipped Power-Propelled Drum Pourer with drum raised to maximum dispensing height

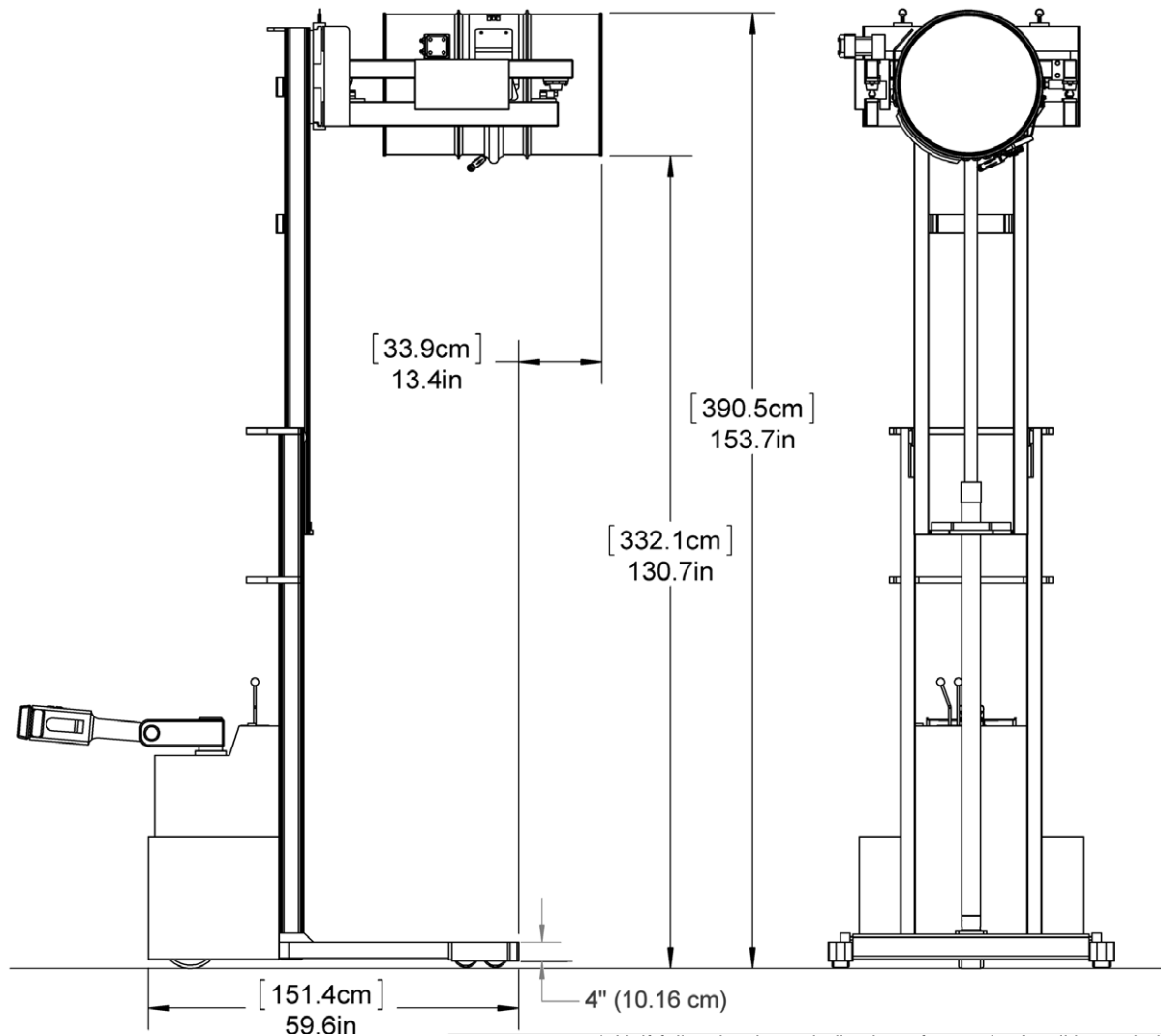


Net Weight: 2270 Lb. (1030 kg)

Capacity

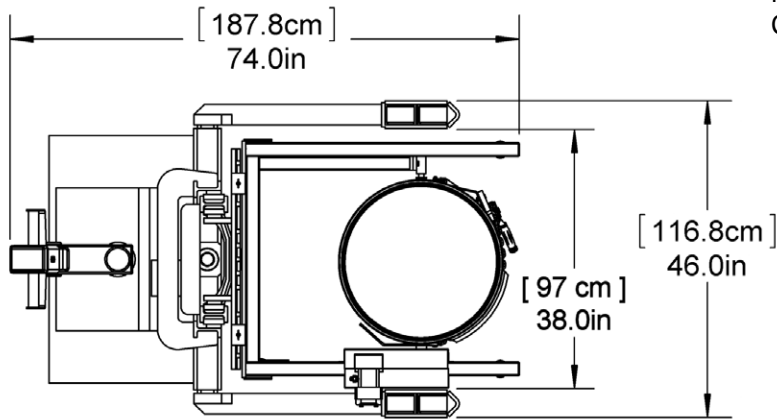
- 800 Lb. (363 kg) Full Drum
- 500 Lb. ( ) Half-Full Drum \*

MADE  
IN  
USA



\* Half-full rating is an indication of capacity for tilting unbalanced, bottom-heavy drum. Partially full drum with unbalanced and shifting load is harder to tilt than full drum.

**Dimensions of Model 905 < PILOT > Scale-Equipped Power-Propelled Drum Pourer  
with drum lowered to floor**

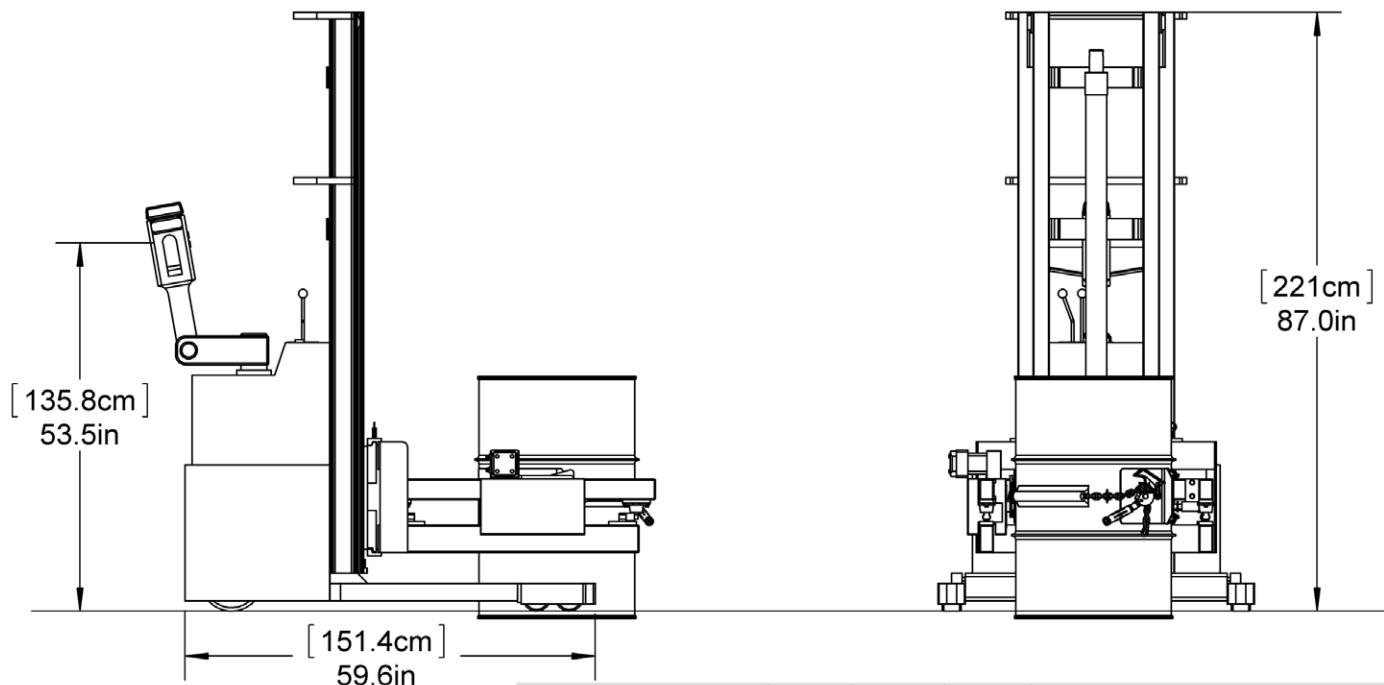


Net Weight: 2270 Lb. (1030 kg)

Capacity

- 800 Lb. (363 kg) Full Drum
- 500 Lb. ( kg) Half-Full Drum \*

MADE  
IN  
USA



\* Half-full rating is an indication of capacity for tilting unbalanced, bottom-heavy drum. Partially full drum with unbalanced and shifting load is harder to tilt than full drum.