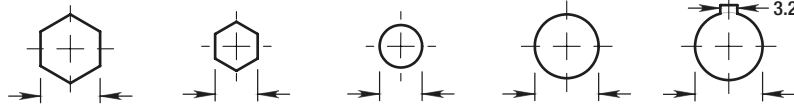







48mm Rotacasters

Bores (nominal)

with Acetal Bushing



Roller Type	Lateral Load Capacity	Hex 11.1	Hex 8	Plain Ø8	Plain Ø12	Keyed Ø12.7	for Ø12.7 keyed bore Ø6.35	Ø8
 65A Polyurethane Roller on Acetal bushing	18 kg*	R1-0484-6561	R1-0484-6568	---	---	---	---	---
		R2-0484-6561	R2-0484-6568	R2-0484-6508	R2-0484-6512	R2-0484-6501	R2-0484-65/D07	R2-0484-65/D08
 90A Polyurethane Roller on Acetal bushing	30 kg*	R1-0484-9061	R1-0484-9068	---	---	---	---	---
		R2-0484-9061	R2-0484-9068	R2-0484-9008	R2-0484-9012	R2-0484-9001	R2-0484-90/D07	R2-0484-90/D08
 Solid TCP Roller (No bushing)	40 kg*	R1-0484-9961	R1-0484-9968	---	---	---	---	---
		R2-0484-9961	R2-0484-9968	R2-0484-9908	R2-0484-9912	R2-0484-9901	R2-0484-99/D07	R2-0484-99/D08

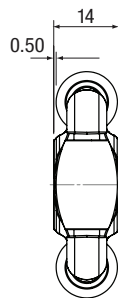
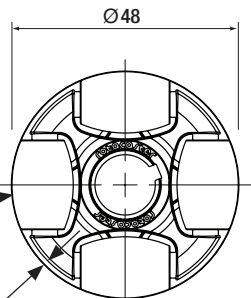
Wheel Dimensions

All dimensions in mm

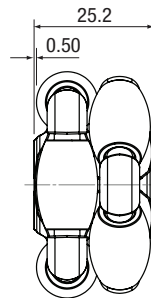
Weight:
Single 20gm
Double 38gm

Ø13 Roller

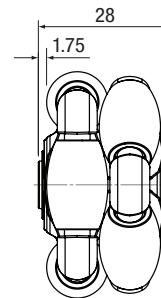
Nominal 1mm radial head clearance



Single wheel



Double wheel



Double wheel with bushing

Conversion

Metric	Imperial
3.2mm	1/8"
6.35mm	1/4"
8.00mm	5/16"
11.1mm	7/16"
12.7mm	1/2"
15.88mm	5/8"
25.4mm	1"
1 kg	2.2 lb

Load Capacity Notes: ■ 90A & Solid Rotacaster wheels have a maximum **Static Load Capacity** of 50kg. ■ **Lateral Load Capacity** refers to the maximum load capacity of each wheel to travel directly sideways without radial head contact. ■ The **Dynamic Load Capacity** (while in motion) ranges between the maximum **Static Load Capacity** and the **Lateral Load Capacity** and varies proportionally to speed of the wheel travelling in its primary direction.

★ Single wheels must be combined with an adjacent wheel indexed to form a continuous circular circumference - load capacity is based on two adjacent single wheels.

10.048.12-01



Distributor

www.magnusinc.com

toll free 800 858 7801

rotacaster.com.au

rotacaster
the ultimate in manoeuvrability



48mm Rotacaster Mounts

Steel Fork



Polymer Cup (Includes wheels)



Aluminium Channel (Only)



Protrusion 'A' 4 mm 7 mm 11 mm Holed Slotted



65A
Polyurethane
Roller on
Acetal bushing
Capacity 18 kg

R2-0484-65/MF

R2-0484-65/MC04

R2-0484-65/MC07

R2-0484-65/MC11

13-3008-13-H

13-3008-13-S



95A
Polyurethane
Roller on
Acetal bushing
Capacity 30 kg

R2-0484-90/MF

R2-0484-90/MC04

R2-0484-90/MC07

R2-0484-90/MC11

13-3008-13-H

13-3008-13-S



Solid
TCP Roller
(No bushing)
Capacity 40 kg

R2-0484-99/MF

R2-0484-99/MC04

R2-0484-99/MC07

R2-0484-99/MC11

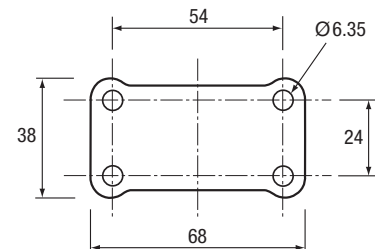
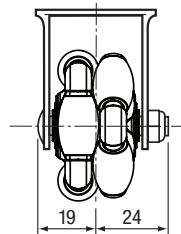
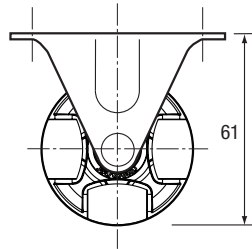
13-3008-13-H

13-3008-13-S

Forks

Zinc plated

Weight: 100 gm

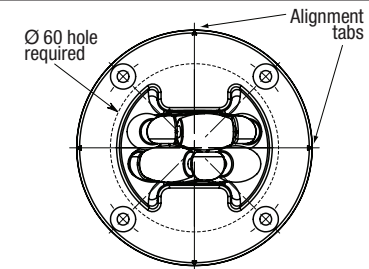
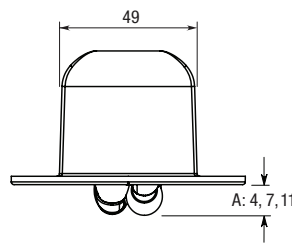
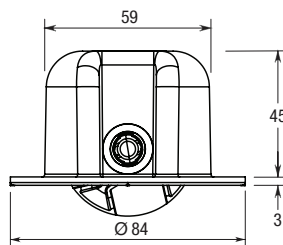


All dimensions in mm

Cups

Full polymer

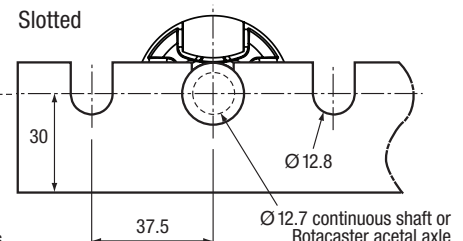
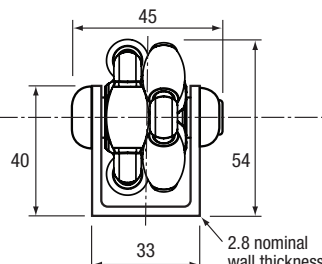
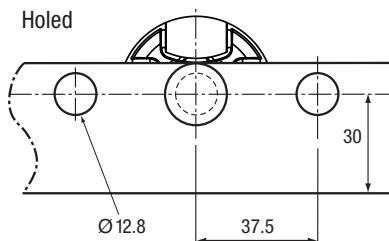
Weight: 80gm



Channels

Aluminium

Weight:
Holed 0.74kg/m
Slotted 0.72kg/m



Distributor

www.magnusinc.com

toll free 800 858 7801

10.048.12-02

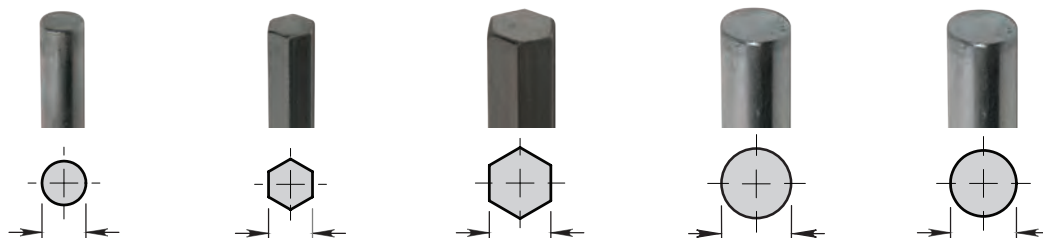


rotacaster.com.au

rotacaster
the ultimate in manoeuvrability



48mm Rotacaster Accessories



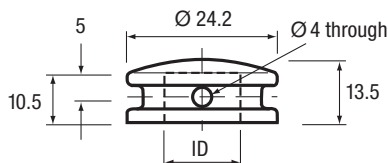
Shafts	Ø8	8	11.1	Ø12.7	Ø12
	14-9702-08	14-9703-08	14-9703-11	14-9702-13	14-9702-12

Nylon Bushings / Spacers	OD Ø12.7	Ø15.88	Ø15.88	Ø15.88
--------------------------	----------	--------	--------	--------



Length	ID Ø8	Ø10	Ø12.7	Ø12
25.2	13-9602-0813-025	13-9602-1016-025	13-9602-1316-025	13-9602-1216-025
50.4	13-9602-0813-050	13-9602-1016-050	13-9602-1316-050	13-9602-1216-050
75.6	---	13-9602-1016-075	13-9602-1316-075	13-9602-1216-075

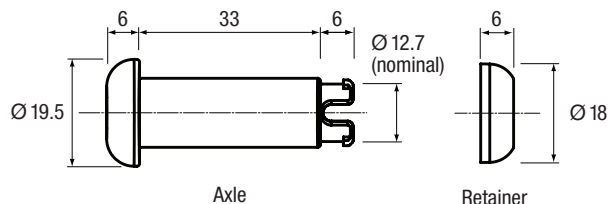
Nylon Axle Caps	Ø12.7 ID	Ø12 ID
-----------------	----------	--------



13-2022-13

13-2022-12

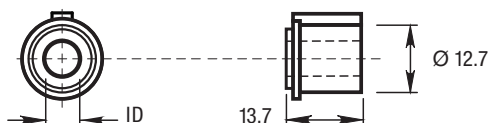
Acetal Axle and Retainer Cap	Ø12.7 Axle	Retainer Cap
------------------------------	------------	--------------



13-2002-13

13-2003-13

Acetal Flanged Bushing	Ø6.35 ID	Ø8 ID
------------------------	----------	-------



13-9605-0713F

13-9605-0813F

10.048.12-02



Distributor

www.magnusinc.com

toll free 800 858 7801



rotacaster.com.au

rotacaster
the ultimate in manoeuvrability



1912 West Business Center Drive | Orange, CA 92867-7906 USA
Phone: 1.800.858.7801 | 1.714.771.2630 | Fax: 1.714.288.7471
www.magnusinc.com

ISO 9001:2008 CERTIFIED

MAGNUS AFFILIATE COMPANIES



CASTER-PRO®

The **Jilson** Group

LOS ANGELES P: 1.800.858.7801 F: 1.714.744.0134
 P: 1.714.771.2630
CHARLOTTE P: 1.800.742.9328 F: 1.704.504.5244
 P: 1.704.599.7009

NEW YORK P: 1.800.969.5400
 P: 1.973.471.2400
 F: 1.973.471.3993