

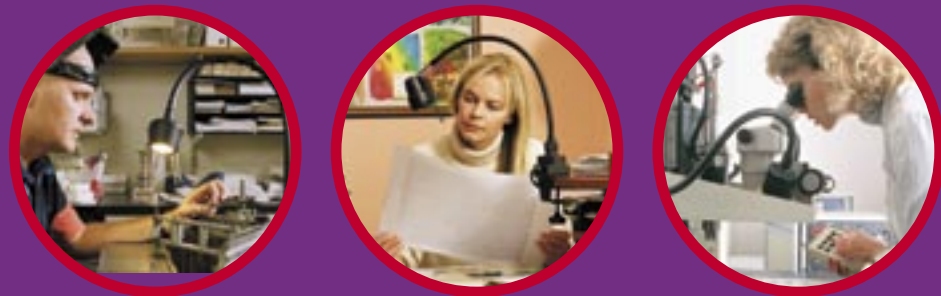
Sunnex Worldwide

Sunnex sales and service representatives are located in over 40 countries worldwide, with the American headquarters in Natick, MA, and its European headquarters in Stockholm, Sweden. Sunnex is an ISO 9001:2000 registered company.

In addition to its machine mount products, Sunnex also manufactures an extensive line of halogen task lighting.

The classic, ergonomic design of Sunnex lamps is engineered for ease-of-use and years of dependable operation. The halogen bulb offers more luminous intensity than a standard incandescent bulb with 80% less energy consumption, and more than 2,000 hours of projected, high-output light. The natural white light enhances operator comfort and efficiency; and the flexible gooseneck arm, articulated arm, and lamp head options allow for unlimited, drift-free positioning. Sunnex quality construction is backed by a ten-year warranty on performance and parts, with a lifetime customer support guarantee.

Sunnex lighting products are available in a wide variety of models with limitless configurations. We offer compact models ideal for lighting small spaces; rugged, moisture-proof models for harsh, industrial environments; optional magnifier attachments for detailed inspection and assembly; and light reflectors and dichroic bulbs for heat-sensitive applications. In addition, Sunnex lamps are available with either gooseneck or articulated arms; bases for the floor, table-top, equipment, or wall mounting; and a variety of power, bulb wattage, and lens options. Custom-configurations are also available at your request.



Visit our USA web site at www.sunnexonline.com



Sunnex Inc.

3 Huron Drive
Natick, MA 01760-1314
USA

Toll Free 800 445 7869
Tel 508 651 0009
Fax 508 651 0099
E-mail sunnex@sunnex.com
www.sunnexonline.com

Sunnex Equipment AB

Box 8064
SE 163 08 Spånga
Sweden

Tel +46 8 546 802 30
Fax +46 8 546 802 59
E-mail info@sunnex.se
www.sunnex.com

Sunnex GmbH

Ricarda-Huch-Str. 2
D-14480 Potsdam
Germany

Tel +49 331 600 77 27
Fax +49 331 600 77 63
E-mail h.wickstrom@t-online.de
www.sunnex.com

Sunnex Equipment Sarl

Z 1 les Milles BP 15400
13794 AIX Cedex 3
France

Tel +33 442 397 896
Fax +33 442 397 877
E-mail sunnex@sunnex.fr
www.sunnex.fr



sunnex®



MACHINE MOUNTS

INTRODUCTION

Company Profile

Table of Contents



For more than 30 years, **Sunnex** has provided its customers with the best products in the industry. From anti-vibration to leveling machine mounts, **Sunnex** manufactures premium, unique products designed for durability and high-performance.

Sunnex sales and service representatives are located in over 40 countries worldwide, with the American headquarters in Natick, MA USA, and the European headquarters in Spånga, Sweden.

Sunnex supplies many companies worldwide, including:

3M
Abbott Labs
Sanmina
Engel

Ford
General Electric
Gillette Company
Hewlett Packard

Motorola
NASA
Toshiba
MPM Group

Extensive Product Offering

Sunnex offers a full range of products for anti-vibration and leveling applications, designed and tailored to provide solutions that transcend industries and markets. Products are manufactured using materials such as stainless steel, high-grade nylon polymer, and nitrile rubber.

Engineering Capabilities

All our products are designed with basic fit and function aspects while utilizing the latest in CAD and manufacturing systems. Our customer's engineering needs can be addressed both locally and globally with engineering facilities located in both North America and Europe.

Quality Control

The same rigid ISO 9002 quality procedures are maintained from engineering through rapid prototype development, and into full production, ensuring a quality product for the customer.

Customer Service

Personnel in customer support are trained to provide application assistance. The **Sunnex** web site hosts 24-hour access to **Sunnex** products using the "Sunnex Online Configurator" (see page 25). Same day shipments on selected quick ship products are also available.

Sunnex Equipment AB - Sweden



Sunnex Inc. - USA



Sunnex GmbH - Germany






Sunnex Equipment Sarl - France

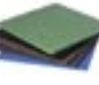
Anti-Vibration Mounts

	M-Series	Classic Equipment Mounting System Applications: Lathes, drill presses, punch presses, mills	page 3
	MHD-Series	High Precision with Dynamic Vertical and Horizontal Stability Applications: Injection molding machines, blow molders	page 5
	WM-Series	High Load; High Precision Applications: Injection molding machines and similar equipment	page 7
	AM-Series	Stainless Steel or Zinc Plated with Resilient Pad Applications: Medical equipment, food processing equipment	page 9
	H3A-Series	Completely Hygienic with FDA Acceptance Applications: Pharmaceutical and food processing equipment	page 11
	Hygienic M-Series	Round, Polished Surface For Frequent Wash-downs Applications: Packaging machines, material handling equipment	page 12
	SM-Series	Economical; Fast and Easy Installation Applications: Injection molding machines, lathes, machine tools	page 13

Leveling Mounts

	LL/LE-Series	Classic, Durable Design Applications: Equipment benches, drill presses, sand blast stations	page 14
	LN-Series	Flexible Design Arrangement; Fracture Resistant Applications: Assembly & processing equipment	page 15
	LS/LP-Series	Corrosive-Resistant with Resilient Pad, 20° Swivel Applications: Workstations, conveyors, machinery	page 17

Specialty Products

	Level Caster	Flexible Design Arrangement; Fracture Resistant Applications: Packaging and assembly equipment, workstations, etc.	page 19
	SP-Series Machine Pads	Absorb Vertical and Lateral Movement, Simple Installation Applications: Grinders, compressors, lathes, pumps	page 21
	FDA Mounts	FDA Accepted Hygienic Mounts Applications: Medical and food processing equipment	page 11
	Resources	Technical Discussion & Ordering Information	pages 23, 24
	Online Tools	Mounts Configurator, 3D View Drawings & RFQ	pages 25, 26

M-Series Heavy Duty Mounts

The M-Series mount is designed for use on machinery that does not require fastening to the floor. It has been designed with the aid of FEM analysis, which prevents fatigue from fast working cycle times and strong lateral forces in heavy machinery.

Replacing the M-series mount is easy - simply unscrew and slide the mount under the machine. The reinforced leveling bolt support cup distributes machine loads to the support points within the mount. The leveling element provides direct and reliable machine mounting to suit most installation needs.

Vertical as well as horizontal forces are dampened out by the integral nitrile pad, which also provides chemical resistance to most fluids.



Model M5

Models M1 and M2



Models M101 and M102

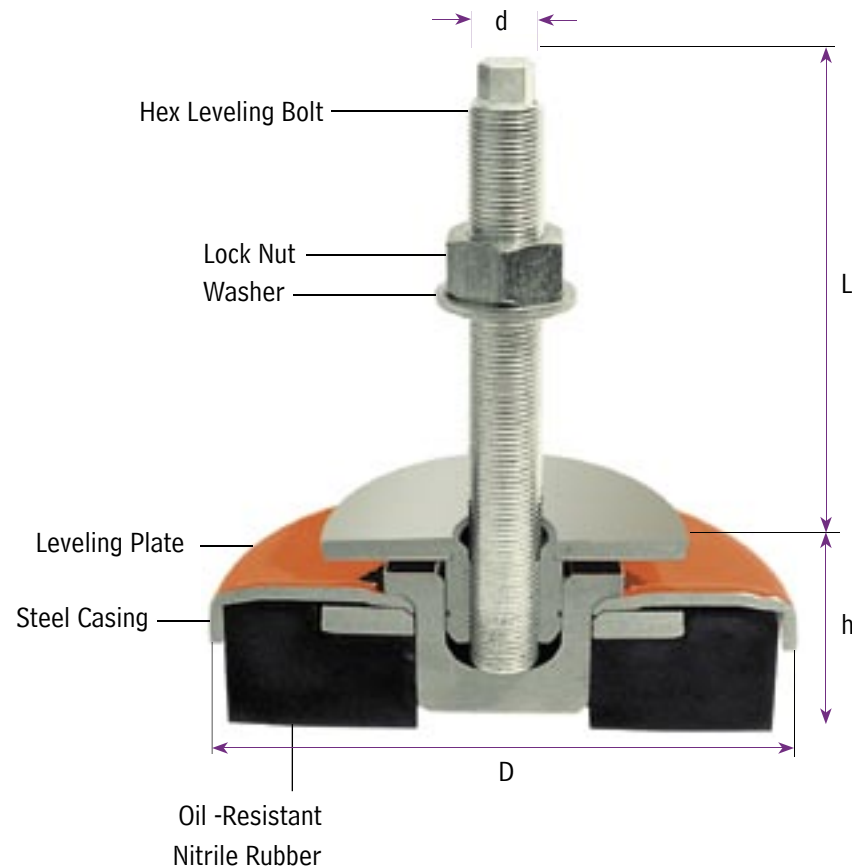


Applications

- Milling Machines
- Lathes
- Grinders
- Drill Presses
- Band Saws
- Screw Machines
- Printing Presses
- Plastic Injection Molding Machines
- Die-casting Equipment
- Punch Presses
- Packaging Equipment

Advantages

- High strength machined components
- Rapid installation & leveling
- Critical noise reduction
- 80% vibration reduction



Accessories:

- Steel Spacers
- Additional Bolt Lengths
- Thread Adapters

Item No.	Model	Load (lbs)	Height, h min. (in)	Adjustment, A (in)	Diameter, D (in)	Thread type d x l	Length L, (in)
10001	M1	1100	1.50	0.50	3.15	M12-1.25 x 120	3.54
10002	M2	2200	1.80	0.55	4.75	M16-1.5 x 120	3.27
10003	M3	4400	2.10	0.60	6.25	M20-1.5 x 170	5.32
10053	M4	8800	2.13	0.60	6.25	M20-1.5 x 170	5.32
10054	M5	12000	2.20	0.60	7.87	M20-1.5 x 170	5.32
10311	M101	1100	2.16	0.40	3.15	N/A	N/A
10312	M102	2200	2.63	0.40	4.75	N/A	N/A

Includes one nut & washer set

See our Online Specifications:
www.sunnexonline.com/mounts/M-series.htm



MHD-Series Precision Leveling Mounts

The MHD-Series leveling mount is ideal for machines exerting large horizontal and vertical thrust forces, where a secure, high-precision connection between bedding element and machine is demanded. A unique, patented design allows the MHD mount to absorb impacts from injection molding machines to achieve improved operation and economy. The product absorbs impulses and shocks in high-speed machinery, where damping material is critical.

The Sunnex MHD mount consists of the following components: impact housing, pressure plate, pressure cylinder, and integrated adjustable screw with nut and washer. This structure guarantees precision leveling to 1/100 mm throughout its leveling range, with no change in natural frequency. In addition, an integral locking device prevents the MHD from coming apart during installation or during relocation of the machine. Single machine set-up points are bolted directly to the mount.

The damping pad is carefully engineered to support static and dynamic loads. It also has a specific stiffness, designed to minimize machine deflection caused by dynamic forces. The elastomer can be customized based on thickness and surface profile to meet specific design requirements.

Additionally, spherical washers can be supplied as an optional extra for uneven support surfaces and floors. These washers are interchangeable with any standard MHD interface design.

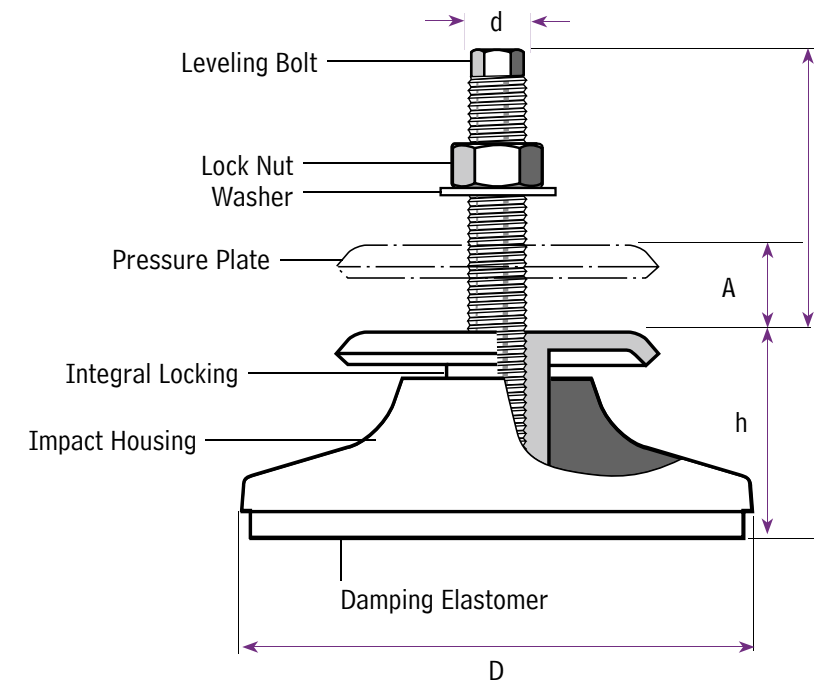


Advantages

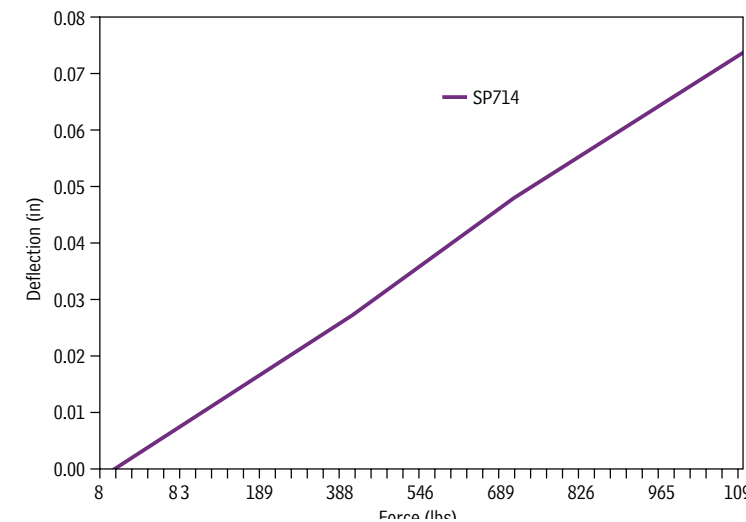
- Excellent horizontal dynamic stability
- Reduced overall height
- Unique design up to 1.18 inches (30 mm)
- Effective vibration isolation improves production output
- Easy installation and relocation
- Minimal lateral deflection
- Allows fine height adjustment under full loads

See our Online Specifications:

www.sunnexonline.com/mounts/MHD.htm



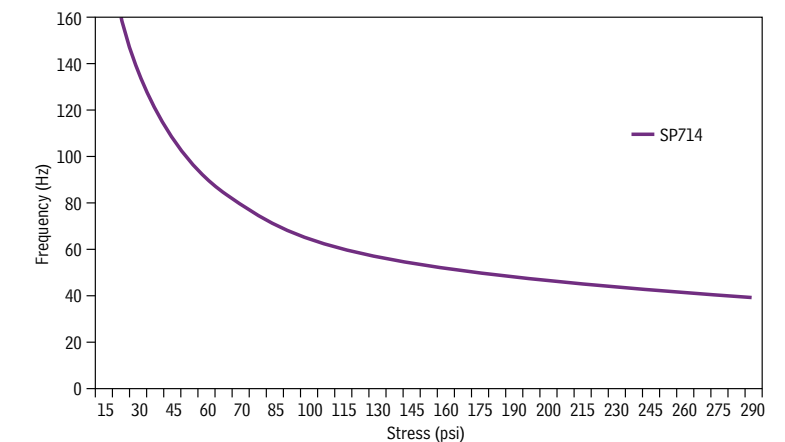
Load vs. Deflection (Vertical)
MHD Machine Mount



Applications

- Injection Molding Machines
- Extrusion Machines
- Blow Molders
- Granulators
- Machine Tools
- Milling Machines
- Measuring Machines
- Grinders

F_n vs. Stress
MHD Machine Mount



Item No.	Model	Load (lbs)	Height, h (in)	Adjustment, A (in)	Diameter, D (in)	Thread type d	Length, L (in)
48003	MHD 130	3300	2.36	0.70	5.50	M16-1.5 x 150	4.33
48003	MHD 165	6000	2.36	0.95	6.85	M20-1.5 x 150	4.15
48009	MHD 190	8800	2.36	0.95	7.80	M20-1.5 x 150	4.15
48012	MHD 240	12000	3.15	1.10	9.65	M24-2.0 x 150	3.54

Includes one nut & washer set

WM-Series

The Sunnex WM-Series wedge style mount is designed for applications requiring passive damping and installation of high load equipment. The WM-Series also incorporates a high-precision leveling system for easy height adjustment.

The WMB-Series wedge style mount is more suitable for installation on machines subject to large horizontal or vertical forces. The bolt-on wedge mount provides a secure and reliable bolt connection between the mount and the machine.

The WMT-Series wedge style mount is more suitable for complex machine arrangements and applications. The bolt-through wedge mount securely anchors the machine to the foundation allowing a "push/pull" machine alignment process.



Advantages

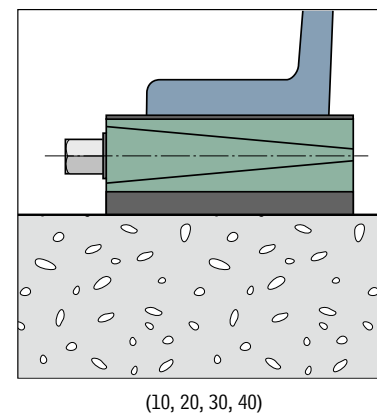
- Precise leveling
- Reliable and secure bolt connection to machine
- Flexible height adjustment
- Extremely secure fastening bolts which allow anchoring to the floor

Free standing, WM

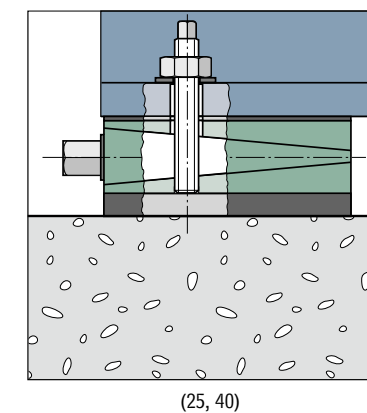
Wedge Mounts	Item No.	Load (lbs)	Adjust., A in (+/-)	Wrench	Height, h Nom. (in)	Length, L in	Width, w in
WM 10	47004	3,300	0.16	13mm	1.57	4.13	2.17
WM 10-14	47074	1,100	0.16	13mm	2.09	4.13	2.17
WM 20	47007	7,700	0.20	19mm	1.61	5.91	2.95
WM 20-14	47070	2,860	0.20	19mm	2.13	5.91	2.95
WM 30	47010	12,540	0.24	22mm	1.77	7.87	3.75
WM 30-14	47065	4,840	0.24	22mm	2.36	7.87	3.75
WM 40	47016	26,400	0.24	22mm	1.93	7.87	7.87
WM 40-14	47067	8,800	0.24	22mm	2.44	7.87	7.87

Free-standing WM-Series mounts available in models 10, 20, 30 and 40. For bolt-on mounts add B to models 25 and 40. For bolt-through mounts add T to models 25 and 40.

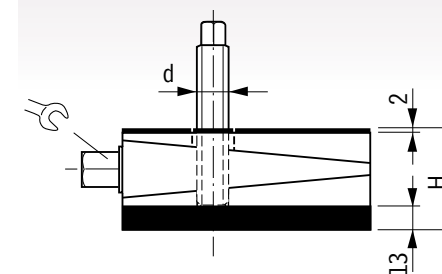
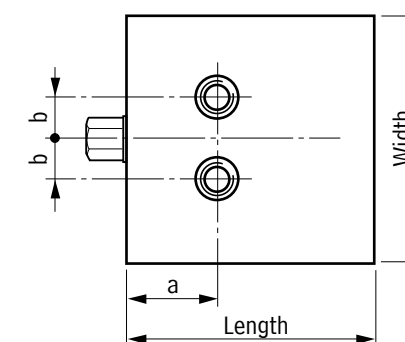
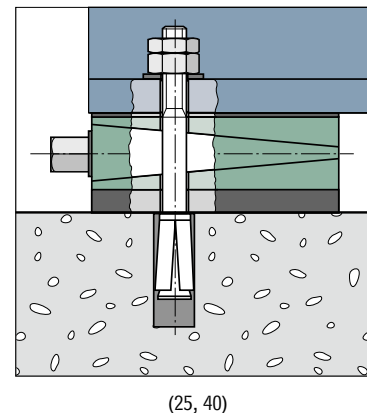
WM-Series (Free-standing)



WMB-Series (Bolt-on)



WMT-Series (Bolt-thru)



Bolt on, WMB

Wedge Mounts	Item No.	Load (lbs)	Adjust., A in (+/-)	Wrench	Height, h Nom. (in)	Length, L in	Width, w in
WMB 25	47024	12,540	0.24	22mm	2.01	5.91	5.91
WMB 25-14	47052	4,840	0.24	22mm	2.52	5.91	5.91
WMB 40	47100	26,400	0.24	22mm	1.93	7.87	7.87
WMB 40-14	47101	8,800	0.24	22mm	2.44	7.87	7.87

a in	b in	d Thread
2.36	0.91	M18
2.36	0.91	M18
2.95	1.06	M20-2.5
2.95	1.06	M20-2.5

Bolt thru, WMT

Wedge Mounts	Item No.	Load (lbs)	Adjust., A in (+/-)	Wrench	Height, h Nom. (in)	Length, L in	Width, w in
WMT 25	47073	12,540	0.24	22mm	2.01	5.91	5.91
WMT 25-14	47072	4,840	0.24	22mm	2.52	5.91	5.91
WMT 40	47022	26,400	0.24	22mm	1.93	7.87	7.87
WMT 40-14	47071	8,800	0.24	22mm	2.44	7.87	7.87

a in	b in	d Hole
2.36	0.91	22
2.36	0.91	22
2.95	1.06	22
2.95	1.06	22

Applications

- Injection Molding Machines (small to mid-sized)
- Pad Printers
- Machine Tools
- Presses
- Stamping Machines
- General Multi-Purpose Machines with Long Beds

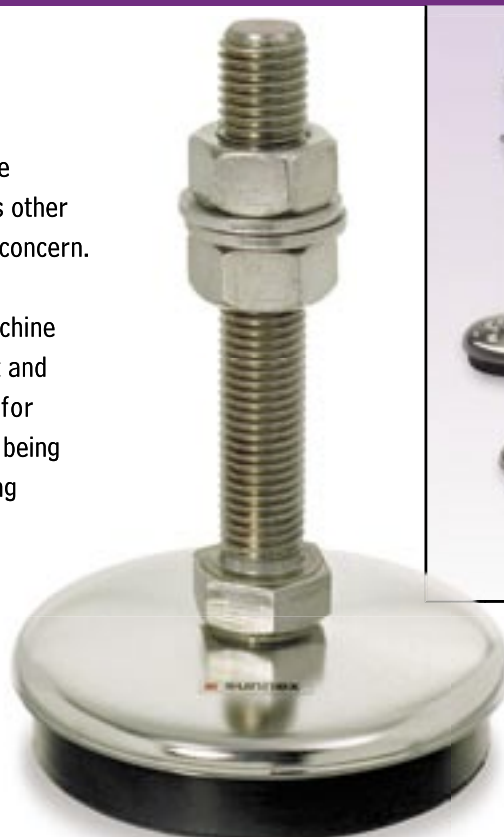
See our Online Specifications:
www.sunnexonline.com/mounts/WM.htm

AM-Series

Sunnex AM-Series mounts are ideal for use in food and chemical processing as well as other applications where vibration isolation is a concern.

Sunnex Stainless Steel and Zinc-Plated machine mounts have no hidden pockets where dirt and moisture can collect, making them ideal for applications where equipment is constantly being cleaned or where corrosion of steel leveling mounts may be a problem.

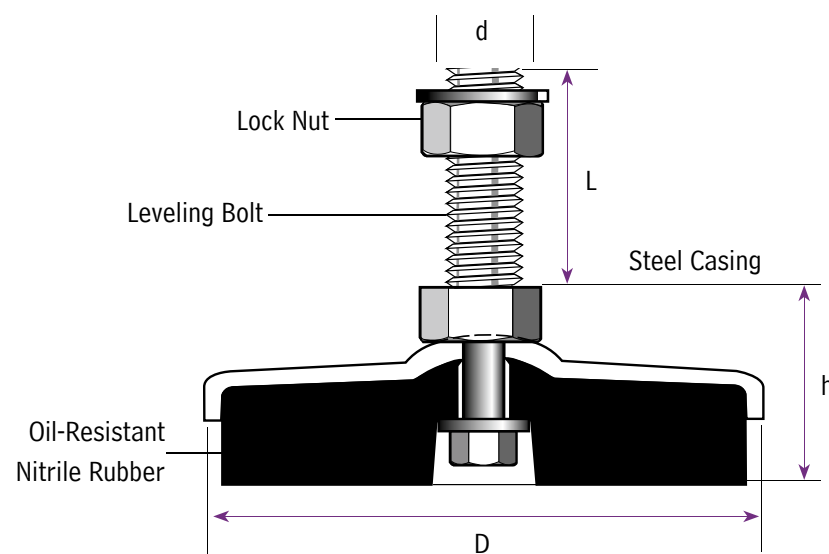
All models are also available in zinc-plated steel for environments where corrosion is not a factor, yet require a high level of vibration isolation.



- #### Advantages
- Corrosive resistant design
 - Swivel up to +/- 7.5° for added flexibility
 - Available in a wide variety of sizes for any application
 - High-grade materials; Non-magnetic 304 grade stainless steel

Applications

- Food & Beverage Packaging Equipment
- Chemical Processing Machinery
- Medical Manufacturing Equipment
- Assembly Equipment
- Semiconductor Processing Equipment



See our Online Specifications:
www.sunnexonline.com/mounts/AM-series.htm

Stainless Item No.	Zinc Plated Item No.	Load Capacity (lbs)	Base Diameter, D (in)	Leveling Bolt d x L	Base Height, h (in)	Overall Ht (in)
102152SS	102152ZP			1/2-13 x 2	15/16	2.94
102154SS	102154ZP			1/2-13 x 4		4.94
102156SS	102156ZP	250	2.64	1/2-13 x 6		6.94
102154SS	102154ZP			1/2-13 x 4		4.94
10211212SS	10211212ZP			M12-1.75 x 120		5.66
102252SS	102252ZP			1/2-13 x 2	15/16	2.94
102254SS	102254ZP			1/2-13 x 4		4.94
102256SS	102256ZP	500	2.64	1/2-13 x 6		6.94
102264SS	102264ZP			5/8-11 x 4	1	5.00
102266SS	102266ZP			5/8-11 x 6		7.00
10221212SS	10221212ZP			M12-1.75 x 120	15/16	5.66
10221612SS	10221612ZP			M16-2 x 120	1	5.66
103154SS	103154ZP			1/2-13 x 4	1 3/8	5.38
103156SS	103156ZP			1/2-13 x 6		7.38
103164SS	103164ZP	1000	3.86	5/8-11 x 4	1 7/16	5.44
103166SS	103166ZP			5/8-11 x 6		7.44
103168SS	103168ZP			5/8-11 x 8		9.44
1031610SS	1031610ZP			5/8-11 x 10		11.44
103174SS	103174ZP			3/4-10 x 4	1 9/16	5.56
103176SS	103176ZP			3/4-10 x 6		7.56
103178SS	103178ZP			3/4-10 x 8		9.56
1031710SS	1031710ZP			3/4-10 x 10		11.56
10311612SS	10311612ZP			M12-1.75 x 120	1 3/8	6.10
10312012SS	10312012ZP			M16-2 x 120	1 7/16	5.66
103254SS	103254ZP			1/2-13 x 4	1 3/8	5.38
103256SS	103256ZP			1/2-13 x 6		7.38
103264SS	103264ZP	2000	3.86	5/8-11 x 4	1 7/16	5.44
103266SS	103266ZP			5/8-11 x 6		7.44
103268SS	103268ZP			5/8-11 x 8		9.44
1032610SS	1032610ZP			5/8-11 x 10		11.44
103274SS	103274ZP			3/4-10 x 4	1 9/16	5.56
103276SS	103276ZP			3/4-10 x 6		7.56
103278SS	103278ZP			3/4-10 x 8		9.56
1032710SS	1032710ZP			3/4-10 x 10		11.56
10321612SS	10321612ZP			M12-1.75 x 120	1 3/8	6.10
10322012SS	10322012ZP			M16-2 x 120	1 7/16	6.16
10322415SS	10322415ZP			M20-2.5 x 120	1 9/16	6.29
104154SS	104154ZP			1/2-13 x 4	1 15/16	5.94
104156SS	104156ZP			1/2-13 x 6		7.94
104164SS	104164ZP	3000	5.50	5/8-11 x 4	2	6.00
104166SS	104166ZP			5/8-11 x 6		8.00
104174SS	104174ZP			3/4-10 x 4	2 1/8	6.13
104176SS	104176ZP			3/4-10 x 6		8.13
104178SS	104178ZP			3/4-10 x 8		10.13
1041710SS	1041710ZP			3/4-10 x 10		12.13
10411612SS	10411612ZP			M16-2 x 120	2	6.72
10412012SS	10412012ZP			M20-2.5 x 120	2 1/8	6.85
10412412SS	10412412ZP			M24-3 x 120	2 1/4	6.97
104254SS	104254ZP			1/2-13 x 4	1 15/16	5.94
104256SS	104256ZP			1/2-13 x 6		7.94
104264SS	104264ZP	4000	5.50	5/8-11 x 4	2	6.00
104266SS	104266ZP			5/8-11 x 6		8.00
104274SS	104274ZP			3/4-10 x 4	2 1/8	6.13
104276SS	104276ZP			3/4-10 x 6		8.13
104278SS	104278ZP			3/4-10 x 8		10.13
4102710SS	4102710ZP			3/4-10 x 10		12.13
41021612SS	41021612ZP			M16-2 x 120	2	6.72
41022012SS	41022012ZP			M20-2.5 x 120	2 1/8	6.85
41022415SS	41022415ZP			M24-3 x 120	2 1/4	6.97

*Includes one nut & washer set

See back page for ordering information.

H3A-Series

These hygienic stainless mounts by Sunnex meet all FDA and USDA requirements for food and drug processing equipment. A special rubber vulcanized to the housing produces a completely hygienic seal. In addition the ANSI 304 stainless steel provides high corrosion resistance. A full range of motion from a 10° pivot provides secure footing and complete vibration control.

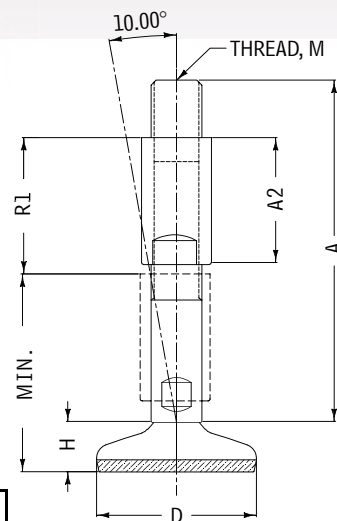
This model is available in a fully FDA accepted version with or without thread casings, for maximum thread adjustment. Both versions are available in ANSI 316 SS for aggressively corrosive environments. Alternative designs include one or two anchoring holes that secure to the floor.



Model H3A

Applications

- Medical Equipment
- Food & Drug Processing Equipment
- Packaging Machinery
- 3A Design-Meat & Poultry Processing Equipment
- Dairy Processing Machines



Advantages

- 304 SS for high chemical resistance
- Wide temperature range: -20 to 100° C
- 10° swivel for increased stability
- Thread casing eliminates contamination
- Thread casing functions as a lock-nut

Item	Load (lbs)	Base Dia. (D)	Thread (M)	Length (A)	Base Ht. (H)	Overall (Ht)	Casing Ht. (A2)	Adjsmt (R1)	Min Ht (Min)
H603A5865R5825	1100	2.36	5/8-11	6.5	1.33	7.8	2.5	2.02	3.98
H603A3465R3425	1100	2.36	3/4-10	6.5	1.33	7.8	2.5	2.02	3.98
H603A3485R3435	1100	2.36	3/4-10	8.5	1.33	9.8	3.5	3.02	6.15
H603A185R135	1100	2.36	1-8	8.5	1.33	9.8	3.5	3.02	6.15
H803A5865R5825	2200	3.15	5/8-11	6.5	1.22	7.72	2.5	2.02	4.05
H803A3465R3425	2200	3.15	3/4-10	6.5	1.22	7.72	2.5	2.02	4.05
H803A3485R3435	2200	3.15	3/4-10	8.5	1.22	9.72	3.5	3.02	5.25
H803A185R135	2200	3.15	1-8	8.5	1.22	9.72	3.5	3.02	5.25
H1003A5865R5825	3300	3.94	5/8-11	6.5	1.34	7.84	2.5	2.02	4.29
H1003A3465R3425	3300	3.94	3/4-10	6.5	1.34	7.84	2.5	2.02	4.29
H1003A3485R3435	3300	3.94	3/4-10	8.5	1.34	9.84	3.5	3.02	5.47
H1003A185R135	3300	3.94	1-8	8.5	1.34	9.84	3.5	3.02	5.47
H1203A5865R5825	5500	4.72	5/8-11	6.5	1.5	8	2.5	2.02	4.4
H1203A3465R3425	5500	4.72	3/4-10	6.5	1.5	8	2.5	2.02	4.4
H1203A3485R3435	5500	4.72	3/4-10	8.5	1.5	10	3.5	3.02	5.59
H1203A185R135	5500	4.72	1-8	8.5	1.5	10	3.5	3.02	4.4

Hygienic M-Series

The Sunnex Hygienic M-Series has a rounded and polished surface design for applications requiring frequent cleaning and wash-downs. The 5° swivel provides excellent stability even on inclined surfaces. Models are available in a wide range of load capacities, bolt diameters and length configurations. The Hygienic-M Series mounts are also available with a thread casing for added cleanliness. Optional anchoring holes are available to provide easy fastening of equipment. In addition, integrated adjustment flats in the bolt allow full adjustment without sacrificing height even in a blind hole design.



Model M-Anchoring

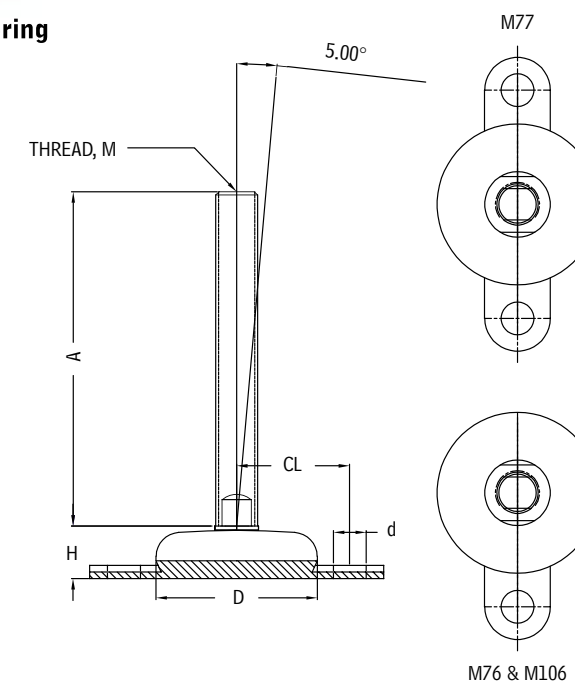
Advantages

- Rubber meets FDA standard
- 177.2600 for food grade requirements
- Rubber permanently vulcanized to housing for hygienic seal
- Wide temperature range: -20° to 100° C
- 5° swivel for increased stability

Item	Load (lbs)	Base Dia. (D)	Thread (M)	Length (A)	Base H	Overall Ht	Hole (d)	Center (CL)
M76124	1770	2.95	1/2-12	4.0	0.87	4.87	0.63	2.05
M76584	1770	2.95	5/8-11	4.0	0.87	4.87	0.63	2.05
M76586	1770	2.95	5/8-11	6.0	0.87	6.87	0.63	2.05
M76346	1770	2.95	3/4-10	6.0	0.87	6.87	0.63	2.05
M77124	1770	2.95	1/2-12	4.0	0.87	4.87	0.63	2.05
M77584	1770	2.95	5/8-11	4.0	0.87	4.87	0.63	2.05
M77586	1770	2.95	5/8-11	6.0	0.87	6.87	0.63	2.05
M77346	1770	2.95	3/4-10	6.0	0.87	6.87	0.63	2.05
M106124	2220	3.94	1/2-12	4.0	1.26	5.26	0.63	2.64
M106584	2220	3.94	5/8-11	4.0	1.26	5.26	0.63	2.64
M106586	2220	3.94	5/8-11	6.0	1.26	7.26	0.63	2.64
M106346	2220	3.94	3/4-10	6.0	1.26	7.26	0.63	2.64

Applications

- Conveyors
- Material Handling Equipment
- Vibratory Feeders
- Shaker Bowls
- Automated Assembly Equipment
- Production Conveyors
- Packaging Filling Machines



See our Online Specifications:

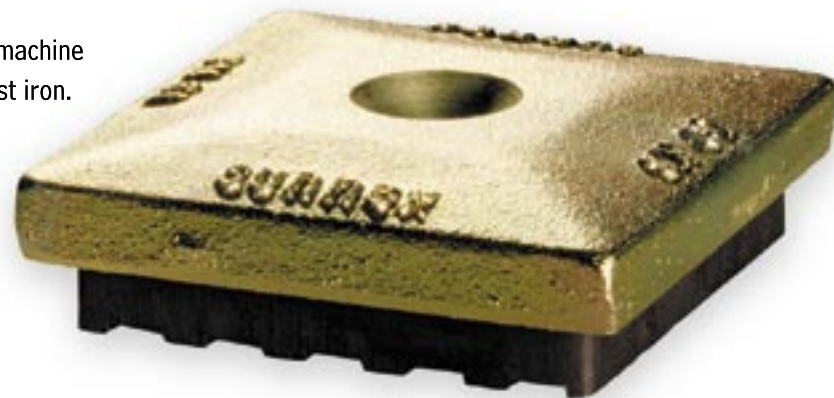
www.sunnexonline.com/mounts/hygienicHa.htm
www.sunnexonline.com/mounts/hygienicM.htm

SM-Series

The Sunnex SM-Series offers economic vibration damping designed for installation of light to medium-duty machinery, particularly in the rubber production industry.

The SM leveling elements are comprised of an SP-Series machine pad and a load distribution plate made of a high-grade cast iron.

For leveling purposes you can choose from a range of leveling bolts based on specific requirements.



Model SM

Standard leveling element models include:
SM = square

Leveling bolts are available in the following sizes:

Item No.	Bolt
11051	M12X120
11052	M16X120
11053	M20X175

Item No.	Model No.	Load (lbs)	Thickness (in)	Length (in)	Width (in)
46002	SM 61-14	1250	1.10	3.30	3.30
46004	SM 62-14	3300	1.20	4.80	4.80
46006	SM 63-14	5300	1.30	5.80	5.80
46008	SM 64-14	7500	1.30	6.80	6.80

* Bolt extra, bolt includes one locking nut and washer

See our Online Specifications:
www.sunnexonline.com/mounts/SM.htm

Applications

- Lathes
- Machine Tools
- Graphic Equipment
- Small to Mid-sized Injection Molding Machines

LL-Series

Sunnex LL leveling mounts are ideal for loads up to 4400 lbs. The LL series is fitted with a rubber pad designed to grip mounting surfaces, and has a solid base design.

The precision ball and socket design of the swivel connection provides a smooth low friction interface from the equipment to the floor. This deep socket joint prevents any debris from getting into the joint connection.

LL-Series Item number	Load Capacity (lbs)	Base Height, h (in)	Base Diameter, D (in)	Thread, d, L (in)
LL 10	2000	1.05	1.25	M12 – 1.75 x 75
LL 12	2500	1.15	1.75	M12 – 1.75 x 75
LL 20	4400	1.15	2.30	M14 – 2.0 x 100



LE-Series

The LE series consists of a rubber molding vulcanized onto a leveling bolt. The rubber molding has excellent friction on most any surface and provides a safe and dependable installation.

The minimal stud length is well suited for both open hole and blind hole applications. Each model comes complete with a nut and washer for leveling and locking in place.

Standard rubber molds are gray in color, however most are also available in a high durometer black rubber for heavy loads.

LE Series Item Number	Load Capacity (lbs)	Base Diameter, D (in)	Base Height, h (in)	Thread Height, L (in)	Thread Type, d (in)
LE 19-1*	90	1.81	0.59	1.50	M10 x 1.5
LE 19-2*	90	1.81	0.59	2.36	M10 x 1.5
LE 19-3*	170	1.81	0.59	1.50	M10 x 1.5
LE 19-4*	170	1.81	0.59	2.36	M10 x 1.5
LE 108	130	1.81	0.31	2.24	M8 x 1.25
LE 213	130	1.18	0.28	1.50	M10 x 1.5
LE 259	75	1.18	0.39	1.10	M6 x 1.00

*Base Material Stainless Steel (SS) or Zinc Plated (ZP)



Applications

- Assembly Stations
- Outside Maintenance Equipment (Motors, Pumps)
- Woodworking Machines
- Compressors
- Small Machines
- Office and Household Machinery

See our Online Specifications:
www.sunnexonline.com/mounts/LL.htm
www.sunnexonline.com/mounts/LE.htm

LN-Series

Sunnex leveling mounts are modular in design, consisting of two parts: a base and a threaded bolt. The mounts can be combined with any thread type and size, allowing you to specify the correct configuration for your application.

Sunnex LN-Series nylon leveling mounts support any type of machinery and equipment, from packaging machinery to office furniture. These mounts provide fast, easy, and precise leveling of all types of machinery and equipment, and are available with a variety of mounting options including bolt-on, free-standing, floor-anchored, and vibration damping pads.

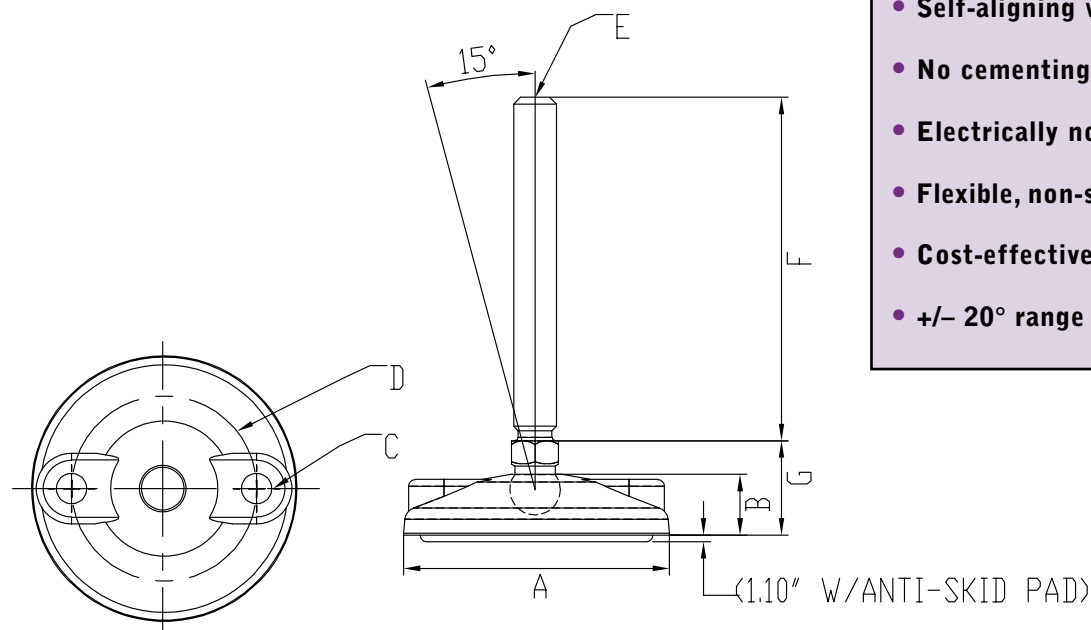


Applications

- Electronics Equipment
- Medical Equipment
- Packaging Machinery
- Conveyors
- Industrial Scales

Advantages

- Fast, easy, and precise leveling of all types of machines and equipment
- Wide variety of configurations
- Self-aligning without sacrificing stability
- No cementing or bolting needed
- Electrically non-conductive
- Flexible, non-scuff or scratch-resistant
- Cost-effective options
- +/- 20° range of motion available



Nylon Leveler Base: No Anchoring Holes

Item No.		Load (lbs)	Base Dia. (A)	Base Ht. (B)
w/o Pads	w/ Pads			
S30TNY	S30TAY	650	1.18	0.71
S40TNY	S40TAY	900	1.57	0.71
S50TNY	S50TAY	1000	1.97	0.71
S60TNY	S60TAY	1300	2.36	0.71
S80TNY	S80TAY	1500	3.15	0.71
S100TNY	S100TAY	1700	3.94	0.71
S120TNY	S120TAY	1900	4.72	0.71

Nylon Leveler Base: With Anchoring Holes

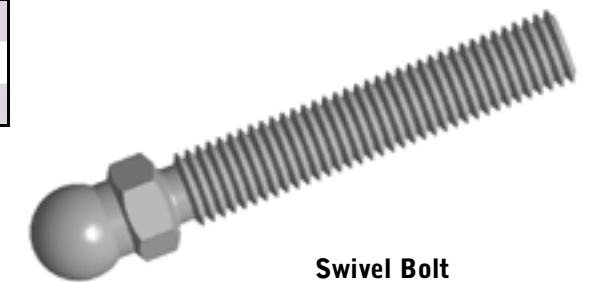
Item No.		Load (lbs)	Base Dia. (A)	Base Ht. (B)	Hole Dia. (C)	Hole Ctr (D)
w/o Pads	w/ Pads					
S80BNY	S80BAY	1500	3.15	0.71	0.35	2.17
S100BNY	S100BAY	1700	3.94	0.71	0.35	2.88
S120BNY	S120BAY	1900	4.72	0.71	0.35	2.88

* Ordering Information

Part No. =	BASE	-	BOLT
Part No. =	S60TNY	-	S1/2X4Z

How to Select a Leveling Mount & Bolt

1. Select the base material (nylon or metal)
2. Select fixed or swivel configuration
3. Select diameter based on load requirements
4. Consider anti-skid and anchoring options
5. Match fixed or swivel bolt with base
6. Select bolt (material, thread and length)



Swivel Bolt

See back page for ordering information.

Metric Threads

Item No.		Thread E	Length F (mm)	Hex Ht G
Zinc	Stainless			
SM10X40Z	SM10X40L	M10-1.5	40	1.2
SM10X100Z	SM10X100L	M10-1.5	100	1.2
SM12X45Z	SM12X45L	M12-1.75	45	1.2
SM12X100Z	SM12X100L	M12-1.75	100	1.2
SM16X80Z	SM16X80L	M16-2.0	80	1.3
SM16X100Z	SM16X100L	M16-2.0	100	1.3
SM16X150Z	SM16X150L	M16-2.0	150	1.3

Inch Threads

Item No.		Thread E	Length F	Hex Ht G
Zinc	Stainless			
S3/8X4Z	S3/8X4L	3/8-16	4.0	1.2
S3/8X6Z	S3/8X6L	3/8-16	6.0	1.2
S1/2X2.5Z	S1/2X2.5L	1/2-13	2.5	1.2
S1/2X3.5Z	S1/2X3.5L	1/2-13	3.5	1.2
S1/2X4Z	S1/2X4L	1/2-13	4.0	1.2
S1/2X6Z	S1/2X6L	1/2-13	6.0	1.2
S5/8X2.5Z	S5/8X2.5L	5/8-11	2.5	1.3
S5/8X4Z	S5/8X4L	5/8-11	4.0	1.3
S5/8X6Z	S5/8X6L	5/8-11	6.0	1.3
S5/8X6.5Z	S5/8X6.5L	5/8-11	6.5	1.3
S3/4X4Z	S3/4X4L	3/4-10	4.0	1.3
S3/4X6Z	S3/4X6L	3/4-10	6.0	1.3
S3/4X6.5Z	S3/4X6.5L	3/4-10	6.5	1.3
S3/4X9.5Z	S3/4X9.5L	3/4-10	9.5	1.3

* Does not include nut or washer

See our Online Specifications:
www.sunnexonline.com/mounts/LN-series.htm

LS/LP-Series

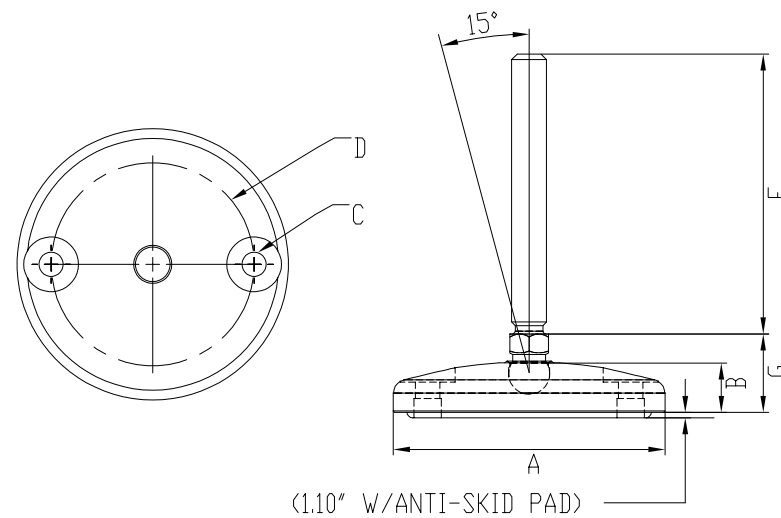
The Sunnex LS and LP-Series of leveling mounts offer the highest load capacity for leveling-only applications. In addition, the mounts have a reduced height profile for limited visibility.

The LS-Series stainless steel model offers corrosion resistance, a smooth surface, and a high quality appearance. The LP-Series cast zinc, powder coated model allows texture and color customization with corrosion resistance for the most demanding environments.



Applications

- Industrial Scales
- Small Scale Metal and Woodworking Machines
- Displays
- Conveyors
- Frame Systems
- Workstations

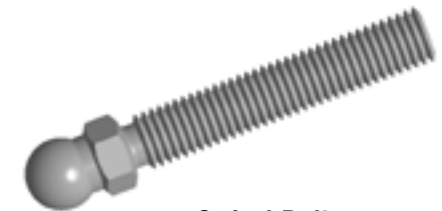


Metal Leveler Base: No Anchoring Holes

Item No.		Load (lbs)	Base Dia. (A)	Base Ht. (B)	Matl.
w/o Pads	w/ Pads				
S30TNP	S30TAP	4400	1.18	0.71	Steel
S40TNP	S40TAP	5500	1.57	0.71	Steel
S50TNP	S50TAP	6500	1.97	0.71	Steel
S60TNP	S60TAP	6800	2.36	0.71	Steel
S80TNP	S80TAP	7200	3.15	0.71	Steel
S100TNP	S100TAP	7600	3.94	0.71	Steel
S120TNP	S120TAP	7800	4.72	0.71	Steel
S30TNL	S30TAL	4400	1.18	0.71	304 SS
S40TNL	S40TAL	5500	1.57	0.71	304 SS
S50TNL	S50TAL	6500	1.97	0.71	304 SS
S60TNL	S60TAL	6800	2.36	0.71	304 SS
S80TNL	S80TAL	7200	3.15	0.71	304 SS
S100TNL	S100TAL	7600	3.94	0.71	304 SS
S120TNL	S120TAL	7800	4.72	0.71	304 SS



Swivel Base



Swivel Bolt

See back page for ordering information.

Metal Leveler Base: With Anchoring Holes

Item No.		Load (lbs)	Base Dia. (A)	Base Ht. (B)	Hole Dia. C	Hole Ctr (D)	Matl.
w/o Pads	w/ Pads						
S80BNP	S80BAP	7200	3.15	0.71	0.35	2.17	Steel
S100BNP	S100BAP	7600	3.94	0.71	0.35	2.88	Steel
S120BNP	S120BAP	7800	4.72	0.71	0.35	2.88	Steel
S80BNL	S80BAL	7200	3.15	0.71	0.35	2.17	304 SS
S100BNL	S100BAL	7600	3.94	0.71	0.35	2.88	304 SS
S120BNL	S120BAL	7800	4.72	0.71	0.35	2.88	304 SS

* Ordering Information

Part No. =	BASE	-	BOLT
Part No. =	S80BAL	-	S1/2X6L

Metric Threads

Item No.		Thread E	Length F (mm)	Hex Ht G
Zinc	Stainless			
SM10X40Z	SM10X40L	M10-1.5	40	1.2
SM10X100Z	SM10X100L	M10-1.5	100	1.2
SM12X45Z	SM12X45L	M12-1.75	45	1.2
SM12X100Z	SM12X100L	M12-1.75	100	1.2
SM16X80Z	SM16X80L	M16-2.0	80	1.3
SM16X100Z	SM16X100L	M16-2.0	100	1.3
SM16X150Z	SM16X150L	M16-2.0	150	1.3

Inch Threads

Item No.		Thread E	Length F	Hex Ht G
Zinc	Stainless			
S3/8X4Z	S3/8X4L	3/8-16	4.0	1.2
S3/8X6Z	S3/8X6L	3/8-16	6.0	1.2
S1/2X2.5Z	S1/2X2.5L	1/2-13	2.5	1.2
S1/2X3.5Z	S1/2X3.5L	1/2-13	3.5	1.2
S1/2X4Z	S1/2X4L	1/2-13	4.0	1.2
S1/2X6Z	S1/2X6L	1/2-13	6.0	1.2
S5/8X2.5Z	S5/8X2.5L	5/8-11	2.5	1.3
S5/8X4Z	S5/8X4L	5/8-11	4.0	1.3
S5/8X6Z	S5/8X6L	5/8-11	6.0	1.3
S5/8X6.5Z	S5/8X6.5L	5/8-11	6.5	1.3
S3/4X4Z	S3/4X4L	3/4-10	4.0	1.3
S3/4X6Z	S3/4X6L	3/4-10	6.0	1.3
S3/4X6.5Z	S3/4X6.5L	3/4-10	6.5	1.3
S3/4X9.5Z	S3/4X9.5L	3/4-10	9.5	1.3

Visit Our Online Configurator:
www.sunnexonline.com/mountsconfig

See our Online Specifications:
www.sunnexonline.com/mounts/LS-series.htm
www.sunnexonline.com/mounts/LP-series.htm

Plate and Stud Type Mounts

This Level Caster Product fits every mounting requirement neatly into one package; offering the functionality of three products for the price of just one. The Level Caster incorporates a high-grade nylon wheel for easy movement, a mount for precise leveling, and a rubber pad for anti-vibration control.



Advantages

- Anti-vibration control, NBR pad
- Easy hand leveling adjustment
- 360° freedom of motion
- Die-cast aluminum frame
- Dual mounting designs
- High quality nylon wheel

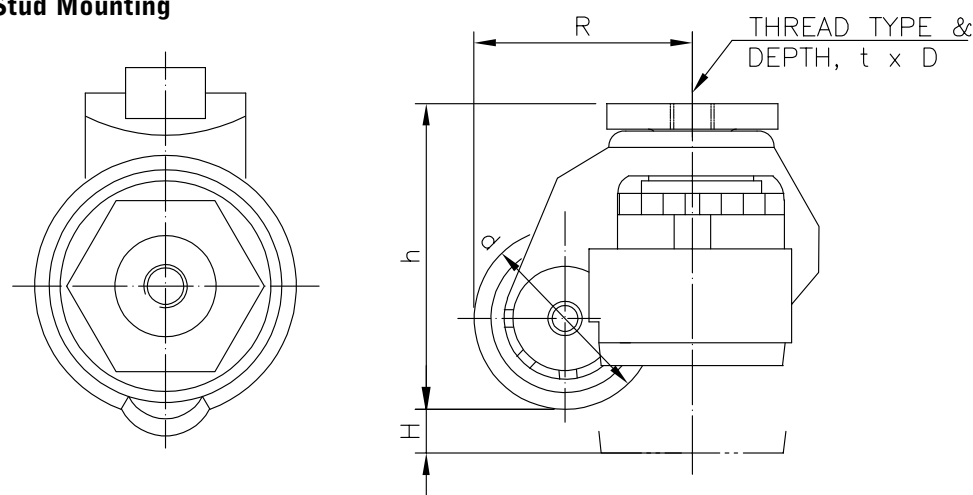


Applications

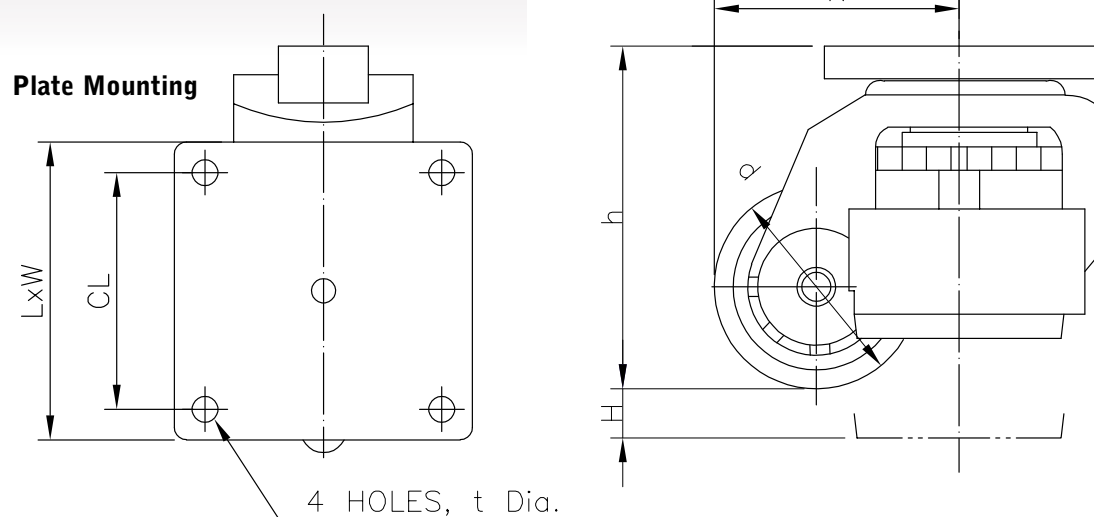
- Packaging Equipment
- Workstations
- Telecommunications Racks
- Assembly Equipment
- Electronics Manufacturing Equipment

See our Online Specifications:
www.sunnexonline.com/mounts/casters.htm

SLC-XXXS: Stud Mounting



SLC-XXXP: Plate Mounting



Item Number Stud Mount	Type	Load Capacity (lbs)	Height, h (in)	Adjustment, H (in)	Wheel Dia., d (in)	Thread type, t	Depth, D (in)	Swivel Radius (R)
SLC-50S	A	50	2.87	0.39	1.65	M8 - 1.25	0.47	2.13
SLC-200SL	B	200	2.78	0.35	1.97	M12 - 1.75	0.59	2.85
SLC-300S	A	300	3.27	0.39	1.97	M12 - 1.75	0.59	2.36
SLC-600S	A	600	4.02	0.59	2.48	M12 - 1.75	0.59	3.28
SLC-1000S	A	1000	4.88	0.71	2.83	M16 - 2.0	0.63	3.52
SLC-1300S*	A	1300	4.92	0.71	2.83	M16 - 2.0	0.63	3.52

*Level tool required for adjustment

Item Number Plate Mount	Type	Load Capacity (lbs)	Height, h (in)	Adjustment, H (in)	Wheel Dia., d (in)	Hole Dia., t (in)	Hole, D (in)	Swivel Radius (R)
SLC-200PL	B	200	2.78	0.35	1.97	0.26	2.28	2.85
SLC-300P	A	300	3.27	0.39	1.97	0.26	2.28	2.36
SLC-400PL	C	400	2.99	0.39	1.97	0.35	2.76	1.99
SLC-600P	A	600	4.02	0.59	2.48	0.35	2.76	3.28
SLC-800PL	C	800	3.74	0.51	2.83	0.35	2.76	2.42
SLC-1000P	A	1000	4.88	0.71	2.83	0.43	2.76	3.52
SLC-1300P*	A	1300	4.92	0.71	2.83	0.43	2.76	3.52
SLC-1800P*	A	1800	5.12	0.98	3.62	0.51	2.76	4.56

*Level tool required for adjustment

SP-Series

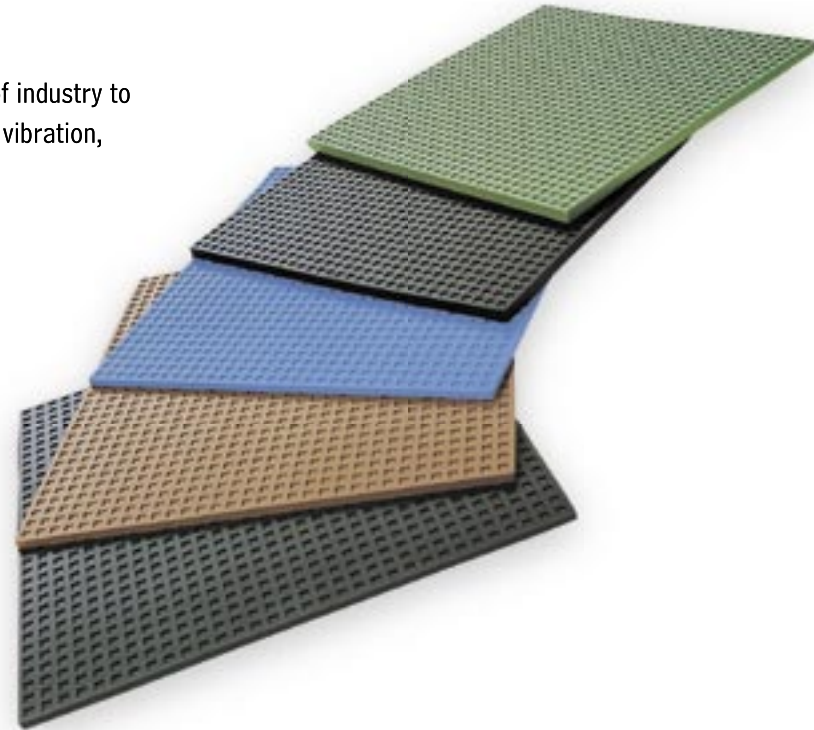
Sunnex SP-Series machine pads are used in many areas of industry to insulate machinery against the adverse effects of impact, vibration, structure-borne noise, or simply to prevent slipping.

There are five types of machine pads to choose from, each with its own specific hardness, natural frequency, and load-bearing characteristics.

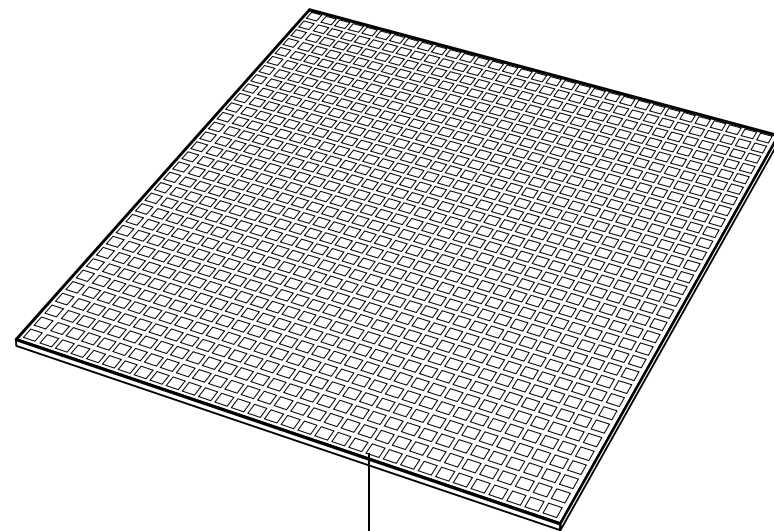
The SP-Series is resistant to all types of grease, acid, oil, and cooling emulsions. In addition, the pads are tolerant to a wide range of ambient temperatures. Pad deflection and spread are offset by the unique cell design.

All machine pads are made of special nitrile rubber, which contains no PVC or silicon. For extra high load bearing values, nitrile rubber reinforced with fiber and plastic is also available.

SP-Series machine pads can be easily modified for your specific space requirements.



See our Online Specifications:
www.sunnexonline.com/mounts/SP.htm

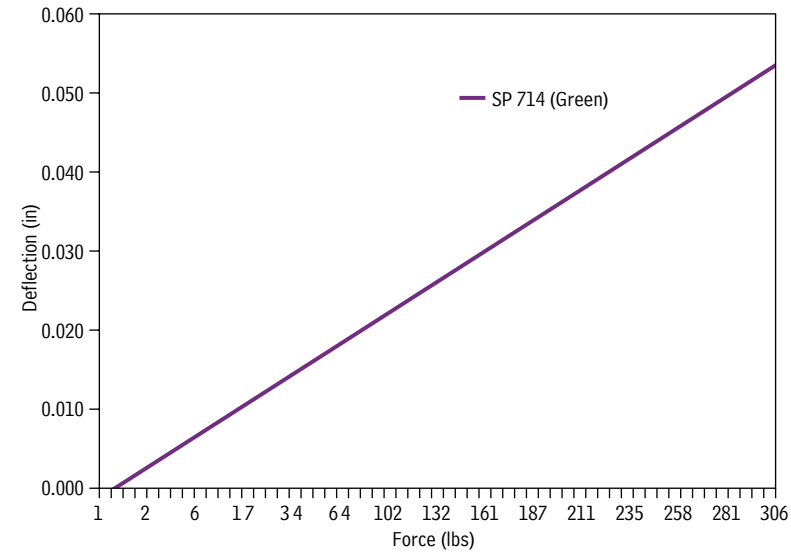


Offset Grip Cells
Top and Bottom

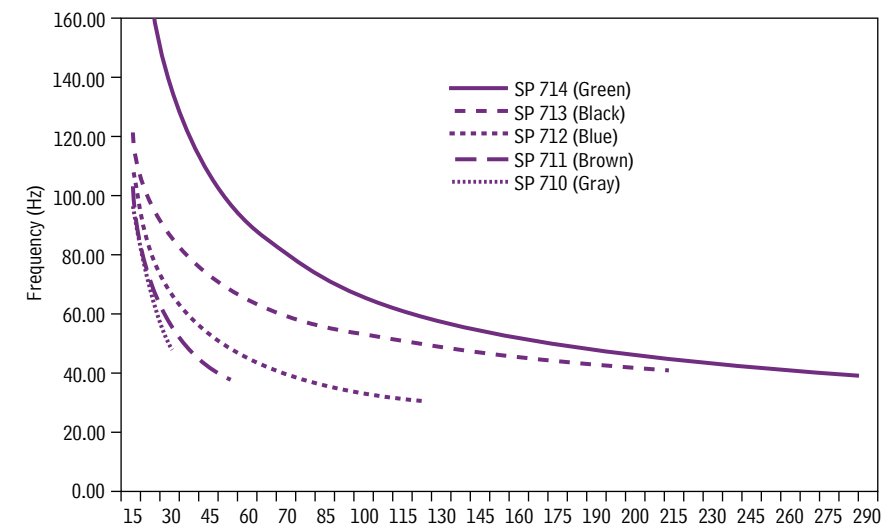
Advantages

- Easily designed to meet thickness, shape and requirements
- High resistance to grease, acid, oil, and cooling emulsions
- Significantly reduces vibration
- Easily sized for different configurations
- Unique cell design offsets pad deflection

Load vs. Deflection
Standard Machine Pad



Fn vs. Stress
Machine Pads



Applications

- Engines
- Motors
- Pumps
- Compressors
- Engine Generator Sets

Also Available:

- Standard pad size 17.75" x 17.75"
- Compact pad size 6" x 6" [-C] (*ie SP714C)

Item No.	Model No.	Color	Load (psi)	Thickness (in)	Length (in)	Width (in)
10710C	SP-710	Gray	25	0.31	6.0	6.0
10710	SP-710	Gray	25	0.31	17.8	17.8
10711C	SP-711	Brown	50	0.31	6.0	6.0
10711	SP-711	Brown	50	0.31	17.8	17.8
10712C	SP-712	Blue	100	0.31	6.0	6.0
10712	SP-712	Blue	100	0.31	17.8	17.8
10713C	SP-713	Black	200	0.31	6.0	6.0
10713	SP-713	Black	200	0.31	17.8	17.8
10714C	SP-714	Green	300	0.51	6.0	6.0
10714	SP-714	Green	300	0.51	17.8	17.8

Introduction

Vibration is a common term used to describe varying degrees of mechanical movement. Vibration can range from the imperceptible seismic motion, to chattering pieces of an automobile, all the way to an earthquake. Any vibration can be classified into three types: Transient, Random, or Periodic. As a rule of thumb, the source of vibration will indicate to some extent the type of vibration generated.

Transient: Large amplitude, short duration, and individual disturbance such as an impact. Presses, shears, or dropped material are all examples of transient vibration sources. **See Figure 1.**

Random: Frequent, but short duration disturbances that can not be defined over time. **See Figure 2.**

Periodic: Motion that repeats its position about some equilibrium point at a constant and repeating period of time. This is the most common type of vibration, and will be discussed further. **See Figure 3.**

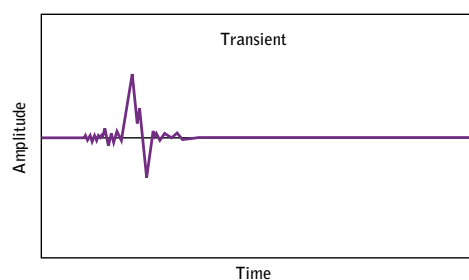


Figure 1.

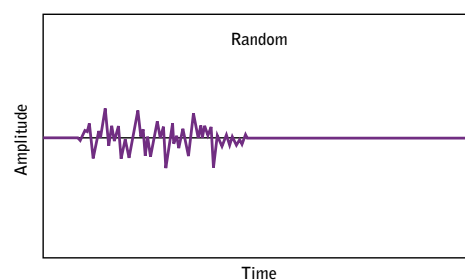


Figure 2.

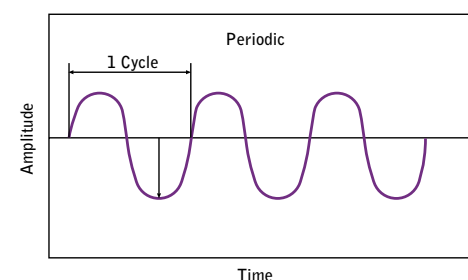


Figure 3.

How to Select a Mount:

In order to optimize the best machine mount or leveler for your application, use the basic approach below. Note this does not consider added weights from the machine movements.

Machine weight, W =	{6000 lbs.}
Number of machine supports, N =	{4}
Load capacity, L = W/N	{6000/4}
L =	{1500 lbs./mount}

Review the available mounting configurations, and compare this load requirement to the load capacity of the mount that meets your design configuration. See pages 3-13 for vibration control, and pages 14-18 for leveling only requirements.

Glossary of Related Terms

Vibration:	Movement of an object on or about its point of equilibrium
Random Vibration:	Motion of an object on or about its equilibrium point whose position can not be known at an instant in time
Stead State Vibration:	Motion of an object about its equilibrium is symmetric and repeats over time
Transient Vibration:	Short duration motion of an object due to an outside force that does not sustain or repeat over time
Forced Vibrations:	Steady state vibration sustained by an outside force (Fd)
Frequency:	The number of cycles completed per unit of time (Hz)
Natural Frequency:	The frequency a system will vibrate once displaced from equilibrium and released (Fn)
Resonant Frequency:	The point at which a systems' natural frequency matches that of a forcing frequency, and undergoes amplification or resonance
Damping:	Frictional resistance to the motion of a system that tends to reduce the amplitude of each consecutive motion (D)

Ordering Information

Anti-Vibration Mounts

When ordering anti-vibration mounts from pages 9 and 10, please add SS for stainless steel material or ZP for zinc plated steel material options. See example below:

Ordering Number = **2254ZP**

Leveling Mounts

When ordering leveling mounts from pages 15 through 18, it is necessary to select and build a part number for the leveler base, and the leveling bolt separately. Fill in the boxes below for each table option.

BASE options are:

S **80** **T** **A** **Y**

+

BOLT options a

S **1/2** **x** **4** **L**

Base type: Swivel (**S**) or Fixed (**F**)
 Base Diameter: i.e. (**30**)...(120)
 Anti-Skid pad: Yes (**A**), No (**N**)
 Base Material: Nylon (**Y**), Powder Coated (**P**)
 Zinc Plated (**Z**), Stainless Steel (**L**)

Bolt type: Swivel (**S**) or Fixed (**F**)
 Thread Diameter: i.e. (**1/4"**)...(1") or metric (**M8**)...(M24)
 Bolt Material: Zinc Plated (**Z**), Stainless Steel (**L**)

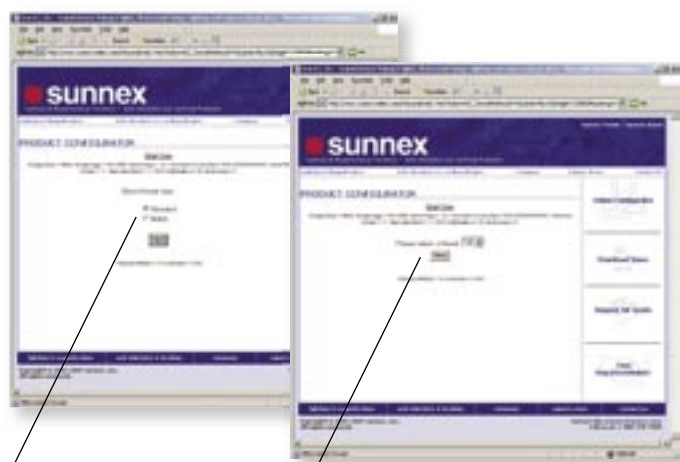
Assembled Part No. S80TAY + S1/2x4L

At **Sunnex**, we are constantly developing products and services to help make your job easier. Our innovative online tools are an example of our commitment to this. These tools allow you to choose, design, and budget the right product for your design.

At www.sunnexonline.com/mountsconfig, you can use our product configurator, an interactive design tool, which helps you choose the right mount for your specific application. Simply answer a few questions, and the configurator will give you the suggested **Sunnex** product by part number for easy reference.



Enter the information into our configurator application and it will determine the best product for your specific application. Our application takes variables such as machine weight, number of feet, anti-vibration, material, thread and bolt sizes and types (standard or metric). It even supports FDA Certification if required.



Standard or Metric

Thread size

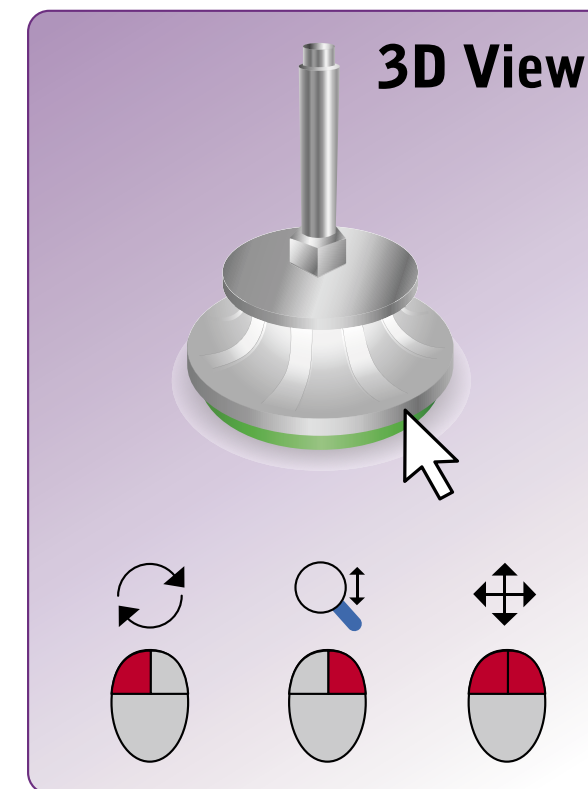
Our configurator application will determine the best primary and secondary solutions for your required machine application. Once it has determined a solution you can select the RFQ feature to generate a quotation request online!

Please visit www.sunnexonline.com/mountsconfig



Sunnex now also offers interactive 3D modeling for its line of anti-vibration and leveling products. This online tool allows you to configure, view, and download drawings of **Sunnex** products directly into your design. Simple and easy to use, the program uses navigation menus to guide you through different options. Both 3D and 2D drawings can be quickly downloaded in various industry standard CAD formats including AutoCAD, Pro-E, Inventor and Mechanical Desktop – just to name a few.

Please visit www.sunnexonline.com/3dview



Sample of 3D View online application

Our RFQ (request for quotation) is yet another tool we developed for your convenience. After you choose the product/s you are interested in, you can then use the RFQ tool to find out pricing and availability on the part you are specifying. **Sunnex** will send you a response within 48 hours, and the quote is valid for up to 30 days.

Please visit www.sunnexonline.com/rfq



Visit www.sunnexonline.com, and explore all of our online tools. You can always find the most updated company and product information on our web site as well.